



The

Bugle



A chance to blow your trumpet for the villagers of
Alport, Middleton and Youlgrave

No. 25

May 2000

NEW SEASON STARTS HERE

As the weather begins to brighten up a little (sometimes) and the days get a little longer, we all need to brace ourselves for the onslaught of the holiday makers that visit the villages. Whatever we think of this invasion, there's no two ways about it, we need the tourists and visitors and, more importantly, the money they could spend in the shops and businesses.

It seems to me that there is an awful lot of money available to fund the various projects that groups are

undertaking, which enhance the area both for us and for the visitors. And there's lots of help and advice available too. There are 'Funding Roadshows' taking place in neighbouring villages, at which interested parties will be most welcome (see details on page 2).

Peak District National Park Authority is launching an initiative called 'Discovering Villages', for which they are holding an introductory meeting on Tuesday 23rd May in the Farmyard Inn. This is to be the biggest public consultative exercise ever undertaken by the Authority, from which they hope to prepare a Management Plan reflecting the

wishes of all groups in the village. To ensure that yours are included in this Plan, make sure you, or, at least, others with similar wishes, attend this meeting.

MIDDLETON by YOULGRAVE

Well Dressing and Village Market
Saturday 27 May 1.30pm
Teas served in the Village Hall
Saturday - Wednesday



YOULGRAVE BOWLS CLUB - OFFICIAL OPENING OF NEW PAVILION

The new bowls pavilion on the Alport Lane Recreation Ground is now in use and the official opening ceremony has been arranged to take place on **Saturday 3rd June at 10.30 am.**

A representative of Sport England, the major sponsor of the £60,000 project, will perform the opening ceremony and make a presentation of a commemorative cheque for £47,000. Small grants totalling £2,700 towards the project have also been made by Derbyshire Dales District Council and Derbyshire County Council. The balance of in excess of

£10,000 has been met by the Bowls Club by fundraising and contributions of voluntary work on the project itself.

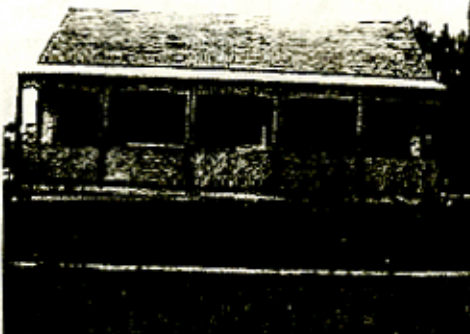
A requirement of the sponsorship that they have received is that the Bowls Club seeks to increase the number of members and a welcome is therefore extended to

anyone aged 12 upwards to come down to the green and give the game a try. The Bowls Club has several sets of bowls that are available for beginners to make use of. Taster sessions and later, coaching sessions are to be arranged.

Currently the annual membership fee is £25, (£17 for Ladies and Senior Citizens) and is free to anyone up to 16 years of age. This is the only charge made for which there are many hours of enjoyment to be had during the season. In addition to competing in various local leagues, the club also arranges a good number of friendly fixtures, which enable beginners to get a taste for competitive play and to visit other greens.

Finally, everyone is welcome to attend the official opening on Saturday 3rd June!!

TB Gladwin, Chairman



Published by Bugle Publications. Editor Emma Youatt, Square House, Middleton by Youlgrave, Bakewell, Derbyshire. DE45 1LS. Phone 01629 636775 (please phone first before faxing), e-mail e.youatt@virgin.net

Contributions to arrive by the 14th each month to Square House or to The Post Office

The views in this publication are not necessarily those of the editorial team.

Printed by **Reprint** Bradford Road, Youlgrave 636410 as a community service free of charge.



The Bugle is Sponsored by Youlgrave Bowls Club

Clowning around at Middleton Welldressing and Village Market

Spring Bank Holiday Weekend sees Middleton's busiest time with the Welldressing going up on Saturday morning followed by the Village Market.

The trading begins at 1.30pm, with stalls including homemade cakes, bric-a-brac, nearly new and plants. Teas will be served in the Village Hall from Saturday through to Wednesday to raise village funds.

Rock Cottage garden will be open and vintage cars will be on display. There will be games for the children and Jacko the Clown will be in the village on Saturday with his charity game, spin the wheel.

The Welldressing team has decreased in number over the years making the work all the harder for those that continue. If anyone from the village, or further afield, would like to join in, they will be very welcome in the playground shed. Work takes place throughout the week prior to Saturday 27th, if you would like to be involved, contact Jean Youatt (tel. 636241).

1940's Tea Dance

Our 'Celebrating the Decades' continues with a tea dance On 3rd June in the Village Hall. There will be live music from 'Chalumeau and recordings of your old favourites. The fun will begin at 4.30pm - so polish up your dancing shoes.

Watch for posters!

FUNDING ROADSHOWS

Derbyshire Rural Community Council (DRCC) is running a funding Roadshow aimed at individuals or groups based in the Derbyshire Dales area.

Who is it aimed at?

Anyone wanting to develop an idea that would benefit the community - from planting a tree to building a village hall or starting a luncheon club - and is looking for up-to-date information on grant schemes available for projects.

Roadshows in the Youlgrave Area:

- Tuesday 16th May at Ashford Memorial Hall, 7-9pm.
- Wednesday 17th May at Birchover Village Hall, 2-5pm
- Wednesday 17th May at Burton Institute, 7-9pm.
- Thursday 18th May at Great Longstone Village Hall, 2.30-4.30pm.

For further information contact DRCC (tel. 821928/9).

WI

Youlgrave WI had an interesting talk from Judy Coggins, Assistant Housekeeper at Chatsworth House, on Tuesday 11th April. Judy had a selection of slides, some of which were taken behind the scenes. She also told us about the jobs that are undertaken during the winter such as cleaning and restoration.

ABBNEYFIELD - GRANBY HOUSE, YOULGRAVE

Where older people find care in housing.

We have a flat in Granby House which is suitable for an older single person or married couple. The flat is unfurnished and comprises a double bedroom, bathroom with shower, sitting room and kitchen.

The flat offers independence, but with the security of knowing that there's always someone else "at home". We can provide meals if required, and the weekly charge of £160.00 includes heating, lighting, water rates, television license, council tax and use of the laundry facilities (meals would be an additional charge).

If you or a friend or relative are interested in this sort of accommodation and would like to visit Granby House please telephone 636721 to arrange a time and date.

Jane Gardner

Refreshments were kindly provided by Mrs Prime, Miss Littlewood and Mrs Clayton.

Youlgrave WI has some photocopies of the old WI Youlgrave book, 'A Record of its Time', by WI members and friends. These are for sale, priced £3, from Ann Knowles. Please contact her to order your copy (tel. 636362).

Join Youlgrave WI for a taster session of Tai Chi in Youlgrave Village Hall on Thursday 18th May, 11am - 2pm including refreshments. Sorry, no children. This form of gentle exercise is new to us all, so don't be shy. For further details, and to put your name down, contact Jennifer Easton, via Roger at the Post Office.

NEIGHBOURHOOD WATCH

Once again, as the holiday season approaches, there is an outbreak of car crime throughout the district, both theft from and of vehicles. This is particularly prevalent in the more touristy areas, such as car parks near popular sites. Sometimes the offenders are stealing vehicles from residential areas to use for their criminal activities. So please will everyone be very vigilant, make sure your car is locked and **DO NOT LEAVE ANY VALUABLES IN CARS**. Also do not hesitate to report any suspicious incidents to the police, dialling 999 if necessary.

attempt to clear our streets of this evidence of our canine friends, the Parish Council has installed some dog poop bins.

Some parts of the village are worse than others. Initially there will be three bins. One at the top of Holywell Lane, to try and keep that clean and for any mishaps on the main street. Another at the bottom of Bradford to keep the dale (leading to the café and towards Alport) clean and the last along Conksbury Lane to keep that and the top of Raper Lane clear.

This is largely a local problem so we need the support of local dog owners if we are to clean up our act. If you haven't a poop scoop, you need a supply of small plastic bags permanently in your pocket. Place your hand in the bag as if it were a glove and grasp the offending pile. (!) With the other hand pull the bag off the back of your hand turning it inside out so that the muck is inside and you are clean on the outside! So, here's to firm stools and clean paths and lanes! Good luck!! AC

All Change

It's funny when you look back and remember how things used to be. I remember when people used to be able to spit on buses. The air upstairs was thick with every sort of smoke and the floor was covered with litter and ash. Then the outrage when an Italian taps you firmly on the arm and points to the 'no smoking' logo, and you're obliged to dot your moment. It's then you realise how clean everywhere is and how sharp your visual surroundings are . . . ideas and attitudes change. We don't assume we can smoke in somebody's house anymore. We ask in the café or restaurant for the smoking areas.

It's become the same with dogs. Dog muck is unacceptable. We don't want it clogged in our shoes or trailed into the house. We don't want to side tackle into it, or for the kids to play in it. In an

Youlgrave Bowls Club - New members welcome - aged 10 plus

News From Youlgrave School

This month's correspondent Andrew Stead (age 11)

PGL weekend

We arrived at PGL at about 4:00pm by coach. We found our accommodation then had a quick tour to see where everything was. We played a few games, had lunch then went to bed.

On Saturday morning we had breakfast, played little games and then headed off to the low ropes and the zipwire. We had lunch then we did the muddy challenge course, the main idea of that was to get as muddy as you can. That was one of my favourite activities. We had tea and went to bed.

We woke up on Sunday and started with the nightline. You were blindfolded and you had to feel a rope through the forest. We did raft building and swimming later that day.

THE TAP DRESSERS : A CELEBRATION

A personal account of a Welldressing Village.

Norman Wilson has written this fascinating account of Youlgrave's Welldressing History. The book, published by Country Books and due to be launched on June 1st, gives a comprehensive view of this ancient custom, as practised in Youlgrave during the past Century.

On the day we left in the morning we did air rifles and quads. I crashed my quad into the trees. We had lunch then we left, but at the time nobody wanted to leave.

The Youlgrave v Baslow Netball Match reported by Ben Fraser-Smith

The last netball match against Baslow was my first netball match. It took place on the 4th April. It was a hard match and we lost 6-1 but the A team won 3-0 and I rather enjoyed myself. It was a cold day but we survived. It was the first mixed team for Youlgrave. Baslow very kindly offered us refreshments which was nice.

The Youlgrave v Great Longstone Matches reported by Sarah Oldfield

On 2nd March we had a netball match against Great Longstone. Our A team won 6-1 and our B team lost 3-0. Phillipa Marshall scored 5 goals and Clare Oldfield scored 1 goal.

The football teams also played, the A team losing 5-0 and the B team drew 1-1.

Playgroup Supervisor Youlgrave

As a result of demand, a playgroup in Youlgrave will be opening in September 2000. We are therefore looking to appoint a fully qualified supervisor who will share our enthusiasm and commitment to this challenging new project.

Qualifications: NNEB, NVQ in Childcare or BTEC National

Hours of Work: 3 ½ hour sessions, 2 days per week. Days have yet to be arranged

Rate of Pay: £6.00 per hour with 4 weeks holiday pay

Closing Date: Written applications should arrive at the following address by the 15th May. They should be marked Private & Confidential to: **Youlgrave Playgroup Committee, c/o Youlgrave School, Youlgrave, Bakewell, Derbyshire**

A further meeting to discuss the playgroup will be held at the Farmyard Inn, Youlgrave on the Monday 22nd May. Anyone interested or with any ideas/suggestions will be made most welcome. For further details please contact either Susannah (tel. 814667) or Viv (tel. 636861).

MAWSTONE MINE

Ever since I worked for a civil engineering firm specialising in tunnelling I have had an interest in tunnels.

My last underground opportunity arose at Mawstone Mine during the installation of the electric pump to supplement the water supply from Blackley Spring for Youlgrave Water Works. The mine owner, Mr. Worthington, gave me permission to accompany his electrician in the cage and descend nearly 200 feet to the floor of the shaft.

As I stepped out I was aware of the stress and struggle that went on immediately after the explosion in 1926 at the working face 500 ft away from where I was standing. It was here that the rescuers placed the bodies in the cage and signalled the winch man to haul up. Amongst all the clutter of mining machinery and equipment and a stack of stemples is one of the original cages. It is somewhat bent and

battered but still a very significant piece of industrial archaeology and well worth preserving.

As the electrician waded along to the pump, I was left to take photos and explore the entrance to the galleries. The constant roar of rushing water led me to take a shot of the main source of this water noise, a fast flowing stream dropping over a sill about six feet wide.



Emma, Richard, Peter, Clare, and Lucy Bright, pictured here in one of the original cages used in the mine along with dogs Bonnie and Friday.

The water flowing underground was a constant threat to the success of many lead mining enterprises in the area. Another and rather more insidious threat was the existence of gas and it was this that created the fatal explosion at Mawstone Mine.

In Youlgrave Cemetery two inscribed headstones are a poignant reminder of the tragedy and heroism of that day.

I enjoyed my half hour stay down the mine and took several photographs including one or two of the electrician at work on the pump.

I felt very privileged to be given the opportunity to see and touch the damp walls of the tunnels that were hacked out of solid limestone. Mawstone Mine has a spiritual atmosphere as well as industrial artefacts in use seventy years ago.

I wonder why there is no Remembrance Day pilgrimage to honour those who were killed and those who died down there as would-be rescuers? It also would show some local respect for the tragedy if responsibility for the upkeep of the unique gates leading up to the mine showing the initials MMY was taken on by the Parish Council. RS

Subs - £25, Senior Citizens and Ladies £17 and up to 16 free

Forthcoming Events

Tuesday 16 th May	Youlgrave Parish Council AGM, Youlgrave Village Hall, 7.15pm.
Wednesday 17 th to Saturday 20 th May	Peacock Players present Dylan Thomas' "Under Milk Wood" The Medway Centre, Bakewell 7.30 p.m. Tickets £5 (concs. £4) available from Dona North (tel. 01629-812939) or from Ward's Shoe Shop, Bakewell. The Wednesday performance is Preview Night for group bookings (min. ten people) at £2.50 per ticket.
Monday 22 nd May	Meeting to further discuss proposals for Youlgrave Playgroup. The Farmyard Inn, 7pm.
Tuesday 23 rd May	'Discovering Villages Initiative' meeting with Peak District National Park Authority. The Farmyard Inn, 7.00pm.
Saturday 27 th May	Middleton Well Dressing Week and Village Market. Middleton Square, 1.30 - 5.00pm.
Saturday 3 rd June	Teas served Saturday - Wednesday in the Village Hall. Opening of Youlgrave Bowls Club's New Pavilion. Alport Lane Recreation Ground, 10.30 am.
Saturday 3 rd June	1940's Tea Dance. Youlgrave Village Hall, 4.30pm
Tuesdays	Yoga with Iris Pimm at Greenfields Farm Barn (tel. 636341), 7.00pm.
Wednesdays	Diane Kettle's Life drawing classes. Middleton Village Hall, 7.30pm.
Fridays	Yoga with Iris Pimm at Greenfields Farm Barn (tel. 636341), 9.30am.
Fridays	Yoga for over 50's. The Scout and Community Hall, 3.30pm.

From the Cookhouse Door

Easter Chocolate Cake

Ingredients

6 oz butter, 6 oz gran sugar, 4 eggs,
1 tbsp marmalade, 6 oz plain flour,
2 tsp baking powder, 2 oz ground
almonds, 4 oz cooking chocolate.

Method

Beat butter and sugar until creamed. Separate the
eggs and mix in the yolks, melted chocolate and
marmalade. Mix the baking powder and flour
together then fold into the mixture with the ground
almonds. Whisk the egg whites until stiff and
carefully fold in. Put mixture into a greased 8" tin
and bake on gas mark 3 for 1 hr 25 min.

For the topping

Cream together 4oz butter, 6oz icing sugar and 2oz
cocoa and spread on cake when cold. Decorate with
mini Easter eggs and a yellow ribbon tied round the
cake. Happy Easter to you all!!



FRIENDS OF YOULGRAVE SCHOOL

Friends of Youlgrave School is a charity which exists to advance
the education of the pupils at School by providing extra facilities
and support. In the past the Friends have contributed reading
scheme books, computer software, science equipment and more.

Being a charity, the Friends are able to recover tax on
donations they receive thus making such sums stretch much
further. From April 2000 the Friends will be able to recover tax
on all donations no matter how small as the £250 limit on gift
aid has been abolished. Please therefore help us by making a
donation to our School today. A gift aid form is printed below
and should be returned to School with your donation.

Gift Aid Declaration Friends of Youlgrave School

Name of Donor _____

Address of Donor _____

Please treat all donations I have made since 6 April 2000 and all
donations I make hereafter as Gift Aid Donations.

I enclose £_____/or I wish to make regular donations by
standing order* and have completed the standing order form.

If you no longer pay an amount of income tax or capital gains
tax equal to the tax we reclaim on your donations (28p for every
£1 you give) you must notify us.

Signature _____ Date _____

Banker's Standing Order

To the Manager _____

(Name and address of your bank)

Account no _____ Sort Code _____

Please pay The Friends of Youlgrave School (National
Westminster Bank PLC, 1 Water Street, Bakewell DE45 1EU
Account no 12039934, Sort Code 60 01 33) a monthly/annual*
sum of:

£_____/_____
(amount in figures then words)

commencing on _____ and on the same day each

month/year* until further notice (*delete as applicable)

Signature _____ Date _____

ANNUAL SPONSORS

Beechwood Estates, Residential and Lettings - - - -	580670/814092
Viv Butler, Meadow Cottage Tea Garden. - - - -	636523
Castle Farm, B&B, Caravans & Camping Barn - - - -	636746
Equity Estates, Commercial Properties - - - -	636815
The Farmyard Inn - - - -	636221
Iris Pimm, Greenfields Farm Barn - - - -	636341
Hollands Butchers - - - -	636234
The Knoll Club, Youlgrave Royal British Legion - -	-
Doug Oldfield, Handiman & Sweep - - - -	636797
Peter Knowles, Architect - - - -	636362
Lathkill Entertainment, Murder Mystery Evenings etc.-	636849
Andrew McCloy, Benchmark Books - - - -	636125
A Murray, The Wee Drann, Bakewell - - - -	812235
Peak Rural Welfare Rights Service 'Benefits Advice' -	0800 214233

The Post Office - - - -	636201
Pots from France - - - -	636043/636689
SR & JK Roper, Builder & Joiner - - - -	636498
Roses Newsagents - - - -	636874
Barbara Scrivener, Reflexology and Massage - - -	636601
Martin Sydee, Painting & Decorating & Renovation 0835 228220/	636013
Youlgrave Abbeyfield, Granby House - - - -	636484
Youlgrave Bell Ringers - - - -	636223
Youlgrave Bowls Club - - - -	636467
Youlgrave & District Horticultural Society - - - -	636151
Youlgrave Neighbourhood Watch - - - -	636611
Youlgrave Parish Council - - - -	-
Youlgrave WI - - - -	-

Annual 'Bugle' sponsorship £10. Please contact Ann (tel. 636362) or Emma (tel. 636775).

Youlgrave Bowls Club - Further Information Peter Rowland (tel. 636467)