

The **Bugle**

**A chance to blow your trumpet for the villagers of
Alport, Middleton and Youlgrave**

No. 182

February 2016

Parish Council discusses illegal lorry movements

At its February meeting, Youlgrave Parish Council received a report on the emergency repairs to the village water mains, most recently at Church Corner. They are cracking under the continued misuse of the 7.5 tonne weight restrictions by heavy goods vehicles through the centre of the village – and consequently costing all households via increased Waterworks call-outs. HGVs are banned from driving through the centre of Youlgrave unless they are making deliveries within the village, accessing a farm, etc.

The Parish Council urges residents who see a vehicle they believe is flouting the ban to record the number plate and any name on the side of the vehicle, as well as the date, time, location and direction of travel of the HGV, and report it to:

- Trading Standards via their simple on-line form:
www.derbyshire.gov.uk/business/trading_standards/weight_restrictions/weight_restriction_reporting/default.asp
- The Parish Clerk, to pass on:
Matthew Lovell, Christmas Cottage,
Church Street, Youlgrave, 636151,
youlgraveclerk@youlgrave.org.uk

Continued on page 7



On 12 February this HGV became completely stuck between buildings at the bottom of Moor Lane, so much so that residents couldn't even walk past to reach their homes. The lorry had a Czech Republic number plate and the driver apparently blamed satnav for taking him down Moor Lane from Long Rake! The Police were called and the vehicle eventually extricated and escorted away.



Bakewell Carpets

Wide range of carpets,
rugs and carpet tiles
Free fitting, free delivery

Free estimates
Home selection service

London House
Matlock Street
Bakewell DE45 1EE
Tel: 01629 814122

Simon Northcott

WILL WRITER

If you need:

- to make a **Will**
- help in **administering** an estate
- to make an **Asset Protection Trust**
- advice on **Inheritance Tax**
- to make a **Lasting Power of Attorney** or appoint a **Court of Protection Deputy**

I CAN HELP YOU

I am a member of the Society of Trust and Estate Practitioners and practise locally. I charge **£100 for a simple Will**, £150 for a couple and £100 an hour for other work.

HOME VISITS TO FIT IN WITH YOUR NEEDS

Email: simon.northcott@talk21.com
www.simonnorthcottwillsandprobate.co.uk

You can contact me on
01629 636523 or 07706 956067

J.W. & J. Mettam Limited

Family Funeral Directors
since 1899

Ambrose House,
Granby Croft,
Bakewell DE45 1ET

(01629) 812114

Member of Parliament for Derbyshire Dales:

Patrick McLoughlin MP

Telephone: 020 7219 3511

E-mail:

patrick.mcloughlin.mp@parliament.uk

Post:

House of Commons
London SW1A 0AA



- Supply & Fitting of all Domestic and Contract Carpets
- Supply & Fitting of Vinyl, Laminate & Karndean Flooring
- Supply & Fitting of Real Wood Flooring
- Supply & Fitting of Sisal and Natural floorings



- ❖ Guaranteed Workmanship
- ❖ Free Fitting Service
- ❖ Free Home Selection Service
- ❖ Moving & Replacement of Furniture
- ❖ Disposal of Old Carpet
- ❖ Customers' Own Car Park

43/47 High Street, Clay Cross, Chesterfield
Tel: 01246 863148



See our **WEBSITE** at: www.nutt.co.uk

VILLAGE NOTICEBOARD

Youlgrave-Bangbutt Village Link AGM

On Thursday 10 March
at 10.30am
in the Reading Room

Royal British Legion

The Ladies Section at Youlgrave has been awarded a certificate in recognition of 50 years of work in their local branch.

One of the original members, Mrs Mary Hollis, is still residing in the village. We are a small group of members who meet socially once a month on the first Thursday evening at 7.30pm in the Reading Room. New members would be very welcome.

Dates for 2016 Youlgrave Welldressing

Friday 10 June – boards in the river

Monday 20 June – puddling

Tues 21-Fri 24 June – dressing of the wells

Saturday 25 June – Welldressing service and blessing

Thurs 30 June – taking down

Welldressing AGM

Wednesday 13 April at 7.30pm,
Youlgrave Village Hall
All welcome

'Pommie Performers'

We are looking to start a new drama group for 6-16 year old boys and girls.

This group will meet 6-7.30pm on a Monday evening at Youlgrave Village Hall.

The sessions will be a chance for children to practice their drama, singing and dancing, whilst also learning about stage design, lighting, make-up, etc.

Each week they will rehearse for a performance to be staged in the summer. We have a fully qualified teacher and professional who will demonstrate various theatre techniques.

All we need now are a few adults who would be willing to help out as needed. Nothing more than being in the hall occasionally at rehearsals, if you like.

You will be need to be CRB-checked (which is easily done) and attend a half-day training session in Matlock which is simple and has even been described as fun! It would be really appreciated if you could help out.

Youlgrave and the surrounding area has some great youngsters and we feel that they would really benefit from this club.

If you can help in any way or to register your child at the club please contact me.

Many thanks

Elaine Harrop
07855 056789
lonners_3@hotmail.com

Phil Beer in concert, 31 March

PHIL BEER is coming to Youlgrave Village Hall on Thursday 31 March at 8pm. Tickets, price £14 each, are available from Anne & John Cooper, call 630282 or email jlac784@hotmail.com.



We have seen Phil many times, both solo and with his colleagues in 'Show of Hands'. Every show seems to be even better than the last and they have played (and filled) the Albert Hall a number of times, so this is a great opportunity to see and hear him. Here are some of his recent reviews:

"A Phil Beer gig is one spent in the company of a true craftsman, a master musician and consummate performer" – Spiral Earth

"A Phil Beer solo gig is far more than a folk concert. As well as a raft of fantastic anecdotes, he dropped in on a range of American greats: Hoyt Axton, Billy Joel, Bruce Springsteen, Steve Earl and blues legends, Reverend Gary Davis and Blind Willie Dixon" – Nottingham Post last year

SHEFFIELD CITY HALL CONCERTS

Saturday 12 March
**ORCHESTRA OF THE AGE OF
ENLIGHTENMENT**

This Concert is now fully booked

Friday 20 May
**MOSCOW STATE SYMPHONY
ORCHESTRA**

Pavel Kogan, conductor
STEPHEN JOHNSON Behemoth
Dances

RACHMANINOV Rhapsody on a
theme of Paganini
SHOSTAKOVICH Symphony No.5
The May concert may seem a long way
off, but already several seats are
booked!

As usual the coach will pick up at 5.30
pm from the top of Holywell Lane, and
then at the George Hotel.

Joy 636868, John 636721

The Derbyshire Singers with Lewisham
Choral Society present

'Elijah' by Felix Mendelssohn

Lorna Anderson (soprano), Catherine Wyn-
Rogers (mezzo), Andrew Mackenzie-Wicks
(tenor) and Gavan Ring (bass)

**On Saturday 12 March at 7.30 pm,
Highfields School, Matlock**

Tickets £15/Concessions £13/Free entry for
under-16s (accompanied by a paying adult)
and students. From Robert Young Florists in
Matlock, Natural Choice in Ashbourne
(01335-346096) or at
www.derbyshiresingers.org. Tickets will also
be available on the door.

For their Spring Concert The Derbyshire
Singers are again joining forces with the
Lewisham Choral Society and a star cast of
soloists and musicians to perform Felix
Mendelssohn's great oratorio 'Elijah'.
www.derbyshiresingers.org

YOULGRAVE PANTOMIME 2016: The Swashbuckling Adventures of Robinson Crusoe

I was hoping for a rousing rendition of 'Where did Robinson Crusoe go with Friday on Saturday night?' but I expect Man Friday has been sacrificed on the altar of political correctness! Anyway, rant over.

I spent the latter part of my working life as a professional wrestler working in such diverse venues as the Winter Gardens, Blackpool and the Pavilion, Matlock Bath and my stage name Billy Two Trees is a reflection of my Youlgrave roots (*I'm sure we'd all like to hear more about your fascinating career some time – Ed*).

Since retirement I have supplemented my Old Age Pension by writing theatrical and literary revues and despite my misgivings about working with animals or children, I agreed when asked by the editorial board of the Bugle to revue this year's panto in conjunction with my 5-year-old granddaughter Rosie.

I really enjoyed this take on the story of Robinson Crusoe, my only criticism



being that the first half was at least 20 minutes too long.

Rosie told me her favourite characters were "the baddy" because she loved the scene where he combed his bald head with a big comb. She thought that was really funny. She also liked the "big girl in the pirates". She meant Grace Hill's character Sophisticate and there is no doubt that Grace is going to be a real stunner in the future.

I would like to run through the main characters giving you the benefit of my extensive show-biz experience – no offence intended!

Robinson Crusoe, Tess Edmonds – she has proper Principal Boy's legs and leads the singing very well.

Polly, Jade Murray – Wonderfully sweet and her voice will strengthen.

Buttercup Crusoe, Nic Wilson – he now plays a great Dame in the long tradition of Youlgrave Panto.

Captain Slinger Hook, Simon Edmonds – an



impressive baddy played with just the right amount of pathos.

Bosun Pat, Keith Evans – perfectly gormless. I thought he was brilliant and made me laugh out loud.

Aurora, Helen Yates – very confident. Her Young Farmers experience shone through.

Freezia, Catherine Henwood – has a good voice.

Davina Jones, Andrea Willans – she's a natural and has obviously trod the boards before.

There was lots of talent in the chorus, which bodes well for the future, and as ever the costumes were wonderful

It was an excellent pantomime – congratulations to Jan Wilson and all the production team.

I will leave the last word to Rosie. She said to me in the car the other day: "Guess what Granddad? I loved that show!"

Billy Two Trees

Parish Council – continued from front page

At their meeting, Councillors also received a report from the Community Land Trust on the future of the village shops and a questionnaire to determine local demand. They will be formally discussing this topic at the March meeting. District Councillor, Graham Elliott, noted that all the recycling bins will be removed from the Coldwell End car park this week and the door to door collections will step up their capacity.

Council has agreed that the next project for the playing fields will be to provide outdoor fitness equipment (a 'trim trail'), probably with three pieces placed together at several locations. We are currently seeking grants but are

COURSES AT YOULGRAVE READING ROOM, SPRING 2016

Art (Botanical) Spring Flowers, Sat 5 March (10am–2pm), fee £22/£20/£11

This one day session is ideal for adults wanting to develop skills in detailed botanical art, with plenty of demonstrations, tips and advice. Some basic equipment is necessary.

Crafts – Floristry for Spring (new designs), Sat 12 March (10am–2pm), fee £22/£20/£11

A one day session for adults wanting to learn or develop floristry skills. The tutor has a number of new spring designs to introduce during this lovely session. Some basic equipment, flowers and flora are required.

Further details for both courses at
www.derbyshire.gov.uk/coursesearch or by calling 01629
813747 or email
bakewell.ace@derbyshire.gov.uk

open to sponsorship and donations to assist this project, as whilst this can be done a few pieces at a time, the more pieces that can be installed in one go the cheaper the overall costs.

Council agreed to endorse in principle the proposals put forward in the consultation for the Scout and Community Hall as an important building for all the community and particularly its youth.

Finally, Council requests that parishioners try and keep the roadside areas of white line marking free from obstruction. They are there to protect pedestrians and access and to keep traffic flowing.

Matthew Lovell, YPC Clerk

Welcome to the new look Bull's Head

Youlgrave's Bulls Head Hotel has recently been refurbished and now the 17th century coaching Inn offers an even more attractive range of meals and real ales, as well as bed and breakfast accommodation and even a few friendly resident ghosts!

Food is served daily, so check out our newly revised menus, including great-value early evening options and Sunday roasts.

We continue to offer a range of Cask Marque Accredited real ales, including Marston's Pedigree, Jennings Cumberland and Wychwood Hobgoblin.

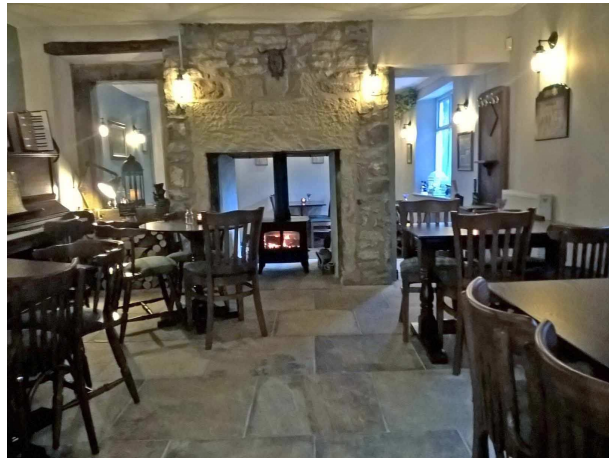
We also have four letting rooms at reasonable B&B rates, including free wi-fi and private parking including bicycle storage.

CONTACT US

Neil & Vicky
Tel 01629 636307

Email Bullshtheadhotel@yahoo.co.uk

www.thebullshtheadyoulgrave.co.uk



Above: The pub's newly renovated Lounge Bar.



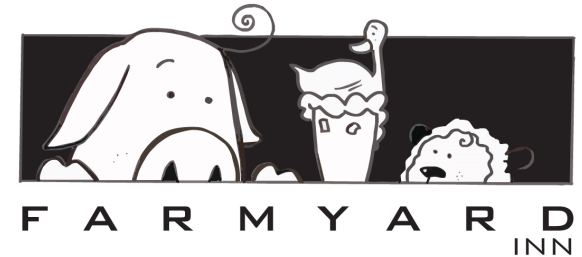
*Come dine with us
at the Bull's Head*

*We have an extensive **main menu** featuring tasty home-cooked options, served every evening, with a specials board and choices for children, as well as a popular **Sunday Dinner menu** served all day from 12 noon.*

*Also look out for our **Early Doors menu**, served 5 -6pm Tues-Fri, with main meals costing just £6 (includes fish and chips, liver and mash, vegetable lasagne, gammon, burgers, etc).*

Join us for a **Paranormal Night**, in conjunction with the Haunted Company, on Saturday 7th May. The Bull's Head is reputedly haunted by the figure of a Cavalier from the English Civil War who roams the hallways, while an ex-landlord sits in the corner of the lounge area watching the goings on of the pub. Shadows are often seen in the upstairs rooms and in the Tap Room bar there are mysterious cold spots! Sounds of footsteps and knocks and banging are often heard, not to mention further poltergeist activity in the old function room, such as glasses flying off tables and pictures coming off walls. Come and join us on 7th May... if you dare!

Tasty goings-on at the Farmyard Inn



The Farmyard Inn: local events

Friday 11th March,
9pm:

FUN QUIZ and STAND-UP BINGO

Book a table in teams of 4 (5 at a push). We've asked the lovely Mick Partridge to make them easier for us this time!

Thursday 24th March:
SPIRITUAL PSYCHIC NIGHT

Half an hour private reading. Tickets for sale in the pub or call to reserve on 01629 636221.

OPENING HOURS:

Monday to Friday, 5pm till close

Saturday and Sunday, 12am till close

We do open in the weekdays for large parties. Don't hesitate to call and ask.

We also have a Function Room to hold daytime or evening meetings in. We cater for parties up to 40 (43 at a squeeze!)

TAKE AWAY MENU

We are now venturing out on a proper take away menu! You can choose one of our many soups from our **Soup Kitchen Board**, £3.95 with Crusty Bread. Or sample one of our **Mini Pies, Peas and Gravy** for £3.95 (£1 extra for our hand cut chips). See our Pie board for choice of fillings that week. We have many different **Curries and rice, Poppadoms and Naans**. See our Curry board for prices and choices. **Beer Battered Haddock and Mushy Peas** costs £6.95, plus £1.00 extra for hand cut chips.

'EARLY BIRD' MENU

Check out our early bird menu at £5.50. Monday to Thursday, 5pm till 6pm.

TUESDAY NIGHT: PIC 'N' MIX NIGHT

Choose three different Sausages (locally sourced, of course) with Creamy Mash potato and Onion gravy for just £6.95.

WEDNESDAY NIGHT: PIE NIGHT

Choose your filling from our pie board, and we bake it for you there and then. Takes 40 minutes to cook (pre orders can be taken by phone beforehand).

THURSDAY NIGHT: CURRY NIGHT

Authentic Curries from different parts of Asia. Choices of Rice. Also popps and pickle tray, and Naans.

And, of course, our 'normal' menu and changing specials are available every night of the week.

All Saints School, Youlgrave

Class 3 have been learning all about the Northern Lights in this term's topic 'Frozen Kingdom'. Haiku is a traditional form of Japanese poetry which consists of three lines. The first and last lines of a Haiku have five syllables and the middle line has seven syllables. The lines rarely rhyme.

A vibrant rainbow

Hypnotizing burst of colour
Enchanting the sky
By Lily

Fire in the sky

Like rushing molten lava
A beautiful site
By Ben

Fabulous colours

Streaks of brightness in the air
Tremendous flashes
By Ryan

Rushing in the air

The sky is painting itself
Spreading oil spills
By Charlie

Whizzing tornado

Sparkling on the horizon
A whirlwind of light
By Lucy

Immense, marbled blue

Streaks as green as emerald
Deviating light
By Naomi

A twirling tutu

colourful flashing colours,
spread out like a cloud
By Esther

Granby House, Youlgrave

Do you live on your own and feel the need for more company and support, but don't want a care home?



At Granby House you can be as independent as you want. You can eat meals cooked by the staff, go on the many social events and treat your en-suite room as you would your own home. All rooms are connected to an alarm system and help can be summoned at any time of day or night.

If more assistance is needed, home help can be arranged. Financial support is available in the same way as it is in a private house. The weekly costs can be surprisingly modest.

If you are interested in hearing more about Granby House, please ring Pat Cleaver on 01629 636836 or email granbyhouse@gmail.com.

What's On @ Youlgrave Village Hall

yvh.org.uk

01629 828 215

Reg Charity: 520538



An evening of music and poetry on the themes of Spring and Love with the Wyns Tor Singers.

Friday 4th March, 7:30pm. Tickets £8 available at Parkers Butchers and Peak Feast, or can be reserved by phoning 01629 636580.



PHIL BEER is coming to Youlgrave Village Hall on Thursday 31 March at 8.00 p.m.

Phil is one of the most popular ambassadors for acoustic roots music. Tickets, price £14 each, available from Anne and John Cooper. Ring 630282 or e-mail jlac784@hotmail.com

Find out what you can do online!

We are running a series of free computer online training sessions at Youlgrave Village Hall, and want to invite anyone and everyone to come along and take part.

It doesn't matter if you've never even touched a computer before or if you already know a bit – this is your chance to give computers and the internet a go. If you've got a spare hour, we're on hand to show you personally how getting online could save you time, hassle and even money.

Call Youlgrave Village Hall on 01629 828 215 to book your free place on one of our sessions which are running every Thursday between 10th March and 28th April 2016.

It's fun, it's free, and it could change how you do your favourite things – and your everyday chores – forever!



Youlgrave Village Hall St George's Day Sale

It's the attic sale, it's a craft sale, the popular cake stall, free refreshments and much more...

23rd APRIL 2016

10am-2pm, Entry 50p

...Stalls to shout about, with something old & something new!

To book a table call Judith on 01629 636 492



BAKEWELL PET SUPPLIES



Free Local Delivery

Tel: 01629 814264

WHEN THE CLOCK STRIKES 3

TRADITIONAL
ENGLISH TEA SHOP

Located in the picturesque Spa Town of Matlock Bath our Tea Shop is in the heart of this beautiful community, with a choice of indoor and outdoor seating. Our ingredients are all locally sourced, with our produce freshly home-made in our kitchens.

PARTIES CATERED FOR

Either with private room hire or at your chosen venue

OUTSIDE CATERING
BUSINESS LUNCHES
FUNERALS, WEDDINGS
AND CHRISTENINGS

Visit us at

14, North Parade, Matlock Bath, Derby's, DE4 3NS

Tel: 01629 580547 **Mob:** 07975 631073

Follow us on:



*When The Clock Strikes 3
Everything Stops For Tea*

BAKEWELL OSTEOPATHY CLINIC

The conditions we can help you with include:

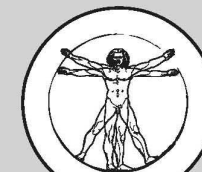
- HEADACHES & MIGRAINES
- NECK PAIN & WHIPLASH
- FROZEN OR STIFF SHOULDERS
- TENNIS ELBOW • SLIPPED DISCS
- REPETITIVE STRAIN INJURIES
- TRAPPED NERVES • LOWER BACK PAIN
- HIP, THIGH OR KNEE PROBLEMS
- POSTURAL CHANGES DURING PREGNANCY
- CHRONIC FATIGUE SYNDROME (ME)

The clinic is also a multi-disciplinary clinic and we offer the following therapies:

- OSTEOPATHY
- SPORTS MASSAGE
- HOMEOPATHY
- ALEXANDER TECHNIQUE
- NUTRITIONAL THERAPY
- HYPNOTHERAPY
- REFLEXOLOGY
- REIKI

CLINIC HOURS AND HOME VISTS:

The Bakewell Osteopathy Clinic is open each week day from 9.00am to 6.30pm (except Wednesdays) and every other Saturday from 9.00am to 2.00pm. We can also arrange home visits by special request.



BAKEWELL
OSTEOPATHY
CLINIC

www.bakewellosteopathy.co.uk

CALL PHIL HELER: 01629 329009 | 07980 930755
First Floor, Rutland Mill, Coombs Rd, Bakewell, DE45 1AQ

YOULGRAVE GARAGE

TEL: 01629 636 943



SERVICE
& REPAIRS



M.O.T.S



BRAKES



BATTERIES



EXHAUSTS



DIAGNOSTICS



AIR
CONDITIONING



TYRES

To read the Bugle in full colour, plus all the back issues and special editions (Bugle 2000, Mawstone Mine Disaster and World War II issue) go to:
www.thebugle.org.uk

And check out the village website
www.youlgrave.org.uk

www.youlgravegarage.co.uk



Feel confident with a Trusted Trader

Finding a company that you can trust to do some work for you can be a bit daunting – how can you be sure that you won't get ripped off? What if things go wrong? How do you choose between lots of different companies? These sorts of dilemmas were a driving force behind the setting up by Derbyshire County Council of the Trusted Trader scheme to help local people find traders and businesses that do a good job at a fair price and provide good customer service.

That was back in 2008 and the popular scheme has gone from strength to strength. These days there are nearly 17,000 searches each month on the Trusted Trader website, www.derbyshire.gov.uk/tt by people looking for reliable companies to use. Another ringing endorsement for the scheme was a recent survey which gathered feedback from more than 16,000 people who had used a Trusted Trader and an impressive 94% said they were very satisfied with the service they received.

So people can have lots of confidence when employing one of the 1,200 traders who are part of the

scheme. In the very unlikely event of someone having a problem with one of the traders then help is at hand. Derbyshire County Council trading standards officers can get involved in any queries involving Trusted Traders and seek to resolve them.

The scheme particularly helps to protect older and vulnerable adults by making it easier for them to use Trusted Traders rather than rogue traders who typically cold-call and use high pressure sales techniques. A recent development has been the inclusion of Financial Advisors who specialise in providing financial advice for people in later life and can help with matters like care fees, pensions and investments.

Find out more about all aspects of Trusted Trader at www.derbyshire.gov.uk/tt or call 01629 536148. Enquiries are also welcome from businesses interested in signing up to the scheme – membership brings lots of benefits and costs only £70 - £100 per year.

REFUGEE CONTRIBUTIONS

Thanks to everyone who donated clothes, blankets, shoes, etc. for refugees in France who are living in appalling conditions. The group are now getting goods out to Syrian refugee camps, so summer clothes are now being collected as well as children's clothes. The group is The Hummingbird Project - you can find them on Face Book. I will collect from you. Maggie 636189

Read the Bugle

in colour at
www.thebugle.org.uk

Includes past issues
and special editions

1,200 TRADERS LISTED

FIND A TRADER YOU CAN TRUST TRUSTED TRADER

 **DERBYSHIRE**
County Council
Improving life for local people

Including
Accountants
Builders
Car repairs
Disability services
Electricians
Financial advisors
Garden design
Hairdressers
Insurance brokers
Locksmiths
Mobility aids
Oven cleaning
Pest control
Plumbers
Roofers
Solicitors
Telephone & television repairs
Upholstery cleaning
Windows
and many more

Call Derbyshire 01629 533190
www.derbyshire.gov.uk/tt

PEAK FEAST

Flavours you'll never forget

The Workshop, Moor Lane, Youlgrave

We now have a variety of fresh breads delivered daily from our new supplier, Jacksons of Chesterfield. Regular orders welcome. We stock a great selection of local cheeses and a range of crackers & biscuits. Perfect to enjoy with our homemade range of chutneys.

We have fresh fruit & vegetables and an expanding range of quality groceries. Bakers of a huge range of cakes, Homity pies, gluten free products, luxury ready meals, quiches and much more to both the wholesale & local market

Mon-Fri 9am-5pm, Sat 9am-12.30pm

www.peakfeast.co.uk
dawn@peakfeast.co.uk

01629 630000 Find us on facebook

Anne Hunt Driving School

**Driving Tuition
New Drivers**

Refresher Courses

Pass Plus registered
30 years experience

Lavender Cottage
Fountain Square, Youlgrave
annie@paua.fslife.co.uk
 01629 636162 07792 059129

David Kenworthy – Joiner

All types of joinery work undertaken

**FREE
QUOTATIONS**

- Glazing
- Doors & windows
- Garden Decking
- Flooring
- Purpose made joinery
- Fitted Kitchens
- Fitted Furniture
- Any General Home Maintenance Work, no job too small

Rose House, Youlgrave, Derbyshire
DE45 1UT

Call David: 01629 636574

Mobile 07791 185536

**CARPET &
UPHOLSTERY
CLEANING**

Soil Protection & Deodorizer



Ants Carpets

Carpets supplied, fitted & refitted

NO JOB TOO SMALL

☎ **Ant 01433 621617**

R. J. MELLOR ELECTRICAL CONTRACTORS

*Professional, reliable &
reasonably priced*

Fully qualified and insured 27 year old Electrical Installer, Inspector and Designer with over 10 years experience working in all areas of the electro-technical industry.

Thank you for your consideration.

Mobile 07816 985291

Email: rjmellorelectricalcontractors@hotmail.com



MVE Soft Furnishings

For quality, hand finished curtains
& soft furnishings

Web: www.mvesoftfurnishings.co.uk
 E-mail: enquiries@mvesoftfurnishings.co.uk
 Tel: +44 (0)771 026 7626

Chris Hancock

**Plumbing &
Heating Engineer**

Gas Safe registered

01629 636455

07595 219256

R. Stone – Joinery

All types of joinery work undertaken
FREE QUOTATIONS

- Glazing
- Doors & Windows
- Hardwood/Softwood
- Flooring
- Purpose made joinery
- Fitted Kitchens
- Fitted Furniture
- Made to measure bespoke kitchens

3 Ivy Lane, Elton, Derbyshire DE4 2BX

Call Rob Stone on 07971 815683



Church Farm recipe of the month: CORNISH PASTY

Now we have no David Figg to get our pies from I have made some myself!

Ingredients

1lb shortcrust pastry
1 egg beaten to glaze

Filling

9oz rump steak
5oz onions chopped
3oz turnip chopped
8oz of thinly sliced peeled potato
Salt and pepper to taste
Pinch of dried thyme

Method

Remove the fat from the lean meat and cut the meat into cubes. Mix together with the vegetables and season

Roll out the pastry and cut into 2 large dinner plate circles, divide the steak mixture between, putting it down the middle of the pastry. Brush the rim of the pastry with the beaten egg and fold over the pastry to make two half circles and bring the two side to meet over the top of the filling. Pinch together and make two holes in the top so that the steam can escape. Place the pasties on a baking sheet, brush them with beaten egg and bake for about 40 mins.

Marjorie Shimwell

News from 100 years ago

Petrol Rationing: As the U-boat menace increased early in 1916 and 'in view of the heavy consumption of motor spirit by the private consumers' the Government was starting to regulate the supply. The Navy and Military authorities would have first choice on all the available supplies, followed by public transport and commercial traction services, whilst the private consumers were to be the last to be considered.

Buying a New Car: A century ago you could buy a new Ford runabout car for £125, or a five passenger car suitable for towing for £135. They came complete with head lamps, side and tail lamps, horn, hood, windscreen, tyre pumps, repair outfit, two levers, tools and pack. The Stud Baker delivery van could be yours for £270.

Beer Prices Up: Derby & District Licensed Victuallers Association has announced that 'On or after Wednesday 15th March 1916 all bottled beers and stout will be increased by 1/2d a bottle and that 1d deposit will be charged on all beer and mineral water bottles.'

Compiled by John Cooper, Youlgrave 1914-1918 Community Group



Busy month ahead for Youlgrave

'Life in The Diplomatic Service' was our February presentation, by Jill Roberts. Like so many of us, she was a campaigner for change within the women's roles of her day, and while living in locations from Washington to Bolivia, she was responsible for entertaining and eventually teaching new skills to the locals. Who else has had a private view of the Pope's bathroom?

Our popular Supper Club took us to The Red Lion at Birchover for an amazing Sardinian culinary experience when 29 of us feasted on delicious antipasta, various meats and even Matteo's own gorgeous cheese!

A chance to learn the art of Burlesque is literally bursting into our March meeting – we always enjoy trying something new – and the unique competition will produce some hilarious results, no doubt! The March lunch at The Ashford Riverside Hotel is another treat for our members.

Yet again, we are attending the Dru Yoga day at Baslow, but with the additional chance to learn some Irish



Matteo plays his Sardinian pipes for Youlgrave W.I. at the Red Lion, Birchover.

Dancing skills. We shall also have representatives at the Spring DFWI meeting in Chesterfield.

Book Group is still going well, and the Craft Group will meet on March 7th and 21st at the Community Room at 2pm. Please see separate advert and the posters for our very popular family Bunny Drive on Friday 8 April.

Liz Hickman

YOULGRAVE W.I. BUNNY DRIVE

Youlgrave Village Hall

Friday 8 April at 7pm

Supper and prizes included

BYO drinks

Adults £5, children £3.50

Oxfam Winter Ceilidh with Grinah

Friday, 4th March

Bakewell Town Hall

Doors open from 7.30pm, dancing from 8pm

Tickets from Bakewell Book Shop or contact Jude Brown 01629 815469

All proceeds will go to Oxfam

Youlgrave Wildlife Notes: January 2016

After a wet and windy winter the last few days have been cold and frosty at night, but calm and sunny and almost spring like during the day. The birds are certainly beginning to think it is spring with a number singing quite well. In the garden the dunnocks have been singing their distinctive twittering song and a song thrush was giving its repetitive phrases not far away. Robins are giving their brief notes and great tits are "teacher-teaching". A cock pheasant has been making advances towards our feral chicken. If not actually welcomed she didn't seem to object and I await developments.

Along the Dale, grey wagtails and a dabchick have been fairly consistent throughout the month. My last report of the kingfisher was on the 15th when it was observed fishing. Dippers seem in very short supply, though, with a report



on the 12th but no recent sightings. The top of Roughwood Hollow gave me a good view of a tree creeper on the 7th. Down the dale-side greater spotted woodpeckers and nuthatches have been visiting feeders. Bullfinches, great, blue, coal and longtailed tits, greenfinches, house sparrows and chaffinches have been visiting other local feeders and there are still a lot of blackbirds about. Kestrels have been seen in the Dale and a male sparrowhawk sat on top of my hedge for several minutes, rather closer to the bird feeders than I would have liked. The small birds all made themselves scarce though. A raven flew over the garden on the 23rd, my attention drawn by its croaking.

The nest boxes on the old Wildlife Area were checked on the 24th. Four out of 8 checked had been used but one had 3 eggs in it. In our garden, 2 out of 4 closed boxes had been used and 1 out of 2 open boxes.

The long horned cattle have been doing a very good job eating scrub on the dale sides. I was a little surprised to see them pulling off large amounts of ivy from the trees and eating it with relish.

Around the 23rd the planet Jupiter was very bright, in spite of being very close to a very full moon. Using binoculars I could clearly see 3 of its moons in a diagonal line, 2 below and 1 above. These moons were originally described by Galileo in 1610. The following night the planet had moved well above the moon but will still be visible for some time.

My pre-writing walk on the 25th found 8 species of wildflowers in bloom. There were 5 tufted ducks on the third dam in the Dale and 5 greylag geese near the New Dam. A few birds including a couple of song thrushes were singing, but the bird of the winter was a brambling in the garden. These winter visiting finches have been very scarce this year.

My thanks for help from Simon, John C, John Y and the New Road Birders

Ian Weatherley

Email: 48iweatherley@gmail.com,
phone: 01629 636350

As big a threat to our culture as the Referendum?!

Why we need to look out for the Asian hornet *vespaveluntina*

FACTS: Originally from China, they have no known predator in Europe. They eat every flying insect, following and 'chomping' them in flight, but mainly target bees, waiting outside the hives. The bees then won't fly out, weaken, starve and the hornet walks in to finish the job.

Three years ago some were observed in France.

By last year the Honey bee population and honey production was reduced to 30%. We don't know the effect of other insects. Their nests are 30m



high in trees and papery like a wasps' nest, but 1-2m diameter and packed with brood. Imagine how many! French exterminators have to wear thick rubber suits due to the sting. They can fly over 22 miles (ie the English Channel) but are most likely to enter through cargo. East Midlands Airport is the largest flight cargo depot... Below are some pictures for you to recognise one if you see it. Please could you note the features and perhaps keep the page to refresh each summer. Obviously if you did see one it would mean an immediate report. The normal bee sized, 2, 2.4, 3cms worker, male, queen (note the bright yellow legs). Pictured top - European Hornet with a yellow face and antenna; pictured below is a Bottom Asian Hornet with a long orange face.

Judith Orchard – tel 630202

Youlgrave Cinema presents:

Pride (Cert 15)

Pride was inspired by an extraordinary true story. It is the summer of 1984, Margaret Thatcher is in power and the National Union of Mineworkers is on strike, prompting a London-based group of gay and lesbian activists to raise money to support the strikers' families. Initially rebuffed by the Union, the group identifies a tiny mining village in Wales and sets off to make their donation in person. As the strike drags on, the two groups discover that standing together makes the strongest union of all. 120 mins



Friday 18 March, 7.30pm, Youlgrave Village Hall

Free to members or £5 on the door

Please support the Bugle in 2016

BUGLE SPONSORSHIP 2016

£25 for businesses/local authorities OR **£20** for individuals and community groups

Name

Address/tel no

Optional one-line description & contact details:

*Please make cheques payable to **The Bugle** and deliver or send them, together with this form, to Ann Knowles, The Garden House, Fountain Square, Youlgrave DE45 1UR. You will be sent a receipt. Thank you.*

Pilates Classes

Achieve a flatter firmer stomach, strengthen the muscles that support the spine & address postural imbalances



Youlgrave Village Hall

Wednesdays
6.00 – 7.00pm Beginners
7.15 – 8.15 Intermediates

£41.00 for a course of 7 sessions
paid in advance £8.50 pay as you go



Village
Hall PILATES

Sheila Wagstaffe Cert Ed FE, CYQ Pilates
07971 566261

sheila@villagehallpilates.co.uk
www.villagehallpilates.co.uk



THE WASH HOUSE

Stained Glass Workshop

Hand-made stained glass panels and gifts

Locally made handcrafted silver and copper jewellery

Drop in if passing – opposite 4 East View, Bradford Road, Youlgrave

Or call Alex on 07532 336378, email alexwoolton1@gmail.com

Youlgrave Medical Centre

For appointments, enquiries, home visits and repeat prescriptions call (01629) **636207**.

SURGERY HOURS

Monday 8.30am - 12pm, 2pm-6pm
Tuesday 8.30am - 1pm
Wednesday 8.30am - 1pm
Thursday 8.30am - 12pm, 2pm-6pm
Friday 8.30am - 1pm

CONSULTATION HOURS

Monday 9am - 11am, 4pm-5.30pm
Tuesday 9am - 11am
Wednesday 9am - 11am
Thursday 9am - 11am, 2pm-5.30pm
Friday 9am - 11am

REGULAR LOCAL EVENTS

- Mondays** Monday Club (Day Centre), Youlgrave Village Hall, 10am-3pm
- Tuesdays** Art Club, 10am-12 noon, ring 630407 for details of venue
- Tuesdays** Yoga with Iris Pimm (636341), The Barn, Greenfields Farm, 7-9pm
- Tuesdays** Youlgrave Bell Ringers practice night, All Saints Church, 7.30-9pm
- Tuesdays** Scouts 7-8.30pm, Scout & Community Hall
- Mon-Fri** Youlgrave Playschool, Scout & Community Hall, 9am-12 noon
- Weds** Art class at Youlgrave Reading Room, 10am, with Diane Kettle (636763)
- Weds** Bingo, Youlgrave Reading Room, 7.30pm
- Weds** Beavers & Cubs, 5.30-6.45pm, Scout Hall, 7.45pm (term time)
- Weds** Pilates, Youlgrave Village Hall, 6-7pm
- Thurs** Yoga with Iris Pimm, 9.30-11.30am
- Thurs** Beginners class 7-8.30pm, The Barn, Greenfields Farm (636341)
- Thurs** Art class at Youlgrave Reading Room, 2-4pm, with Diane Kettle (636763)
- Thurs** Youlgrave Silver Band, Methodist School Room, 7.30-9.30pm (learners at 7pm), all welcome
- 2nd Tues** Youlgrave WI meetings, Youlgrave Village Hall, 7.30pm (636353)
- 3rd Tues** Youlgrave Parish Council meeting, Village Hall Committee Room, 7.15pm (636151)
- 2nd Fri** Mobile Library, Grove PI 3.30-4pm
- 4th Wed** Confidential Advice Sessions with Matlock & District Citizens Advice Bureau, Youlgrave Medical Centre, 9.30am-12.30pm

THE BUGLE: Andrew McCloy (Editor), Englemere, Brookleton, Youlgrave, Derbyshire DE45 1UT tel 01629 636125

e-mail andrew.mccloy@btinternet.com www.thebugle.org.uk.

Printed by Greenaway Workshop, Hackney, Matlock (tel 01629 734089).

The views in this publication are not necessarily those of the editorial team.

ANNUAL SPONSORS: BUSINESSES & PROFESSIONALS

Aloe Vera For You, your local agent for Forever Living Products – Aloe Vera & Beehive products

lisabingham123@btinternet.com, 07855 856948

Amy's Dairy, for delivery of fresh milk, free range eggs, cream and fruit juices on your doorstep

636639 & 07799 880740

Bakewell Bridge Car Park (M. & D. Rhodes),

Coombs Road, Bakewell 636453

Dave Brown, Plastering and Home Maintenance

630474 & 0777 3045148

Bulls Head 636307

Graham Elliott, Derbyshire Dales District Councillor

636943 (office) & 636318

Farmyard Inn 636221

Chris Hancock, Plumbing & Heating Engineer, Gas

Safe Registered 636455 & 07595 219256

Hopping Farm Caravan Site (Mrs M. Frost) 636302

Anne Hunt, Driving School – Beginners, Refresher

courses, Pass Plus 636162

Long Rake Spar Co Ltd, The largest selection of

decorative stones for all your garden projects 636210

J.W. & J. Mettam, Family Funeral Directors since

1899 812114

Simon Northcott, Will-making, estate administration,

inheritance tax advice, lasting powers of attorney

simon.northcott@talk21.com, 07706 956067

Judith Orchard, Tailoring, repairs, alterations, dress

designs (proceeds to Bangbutt) 630202

T.Nutt & Sons, Supply and fit carpets, vinyl, wood,

laminare and karndean www.nutt.co.uk 01246 863148

The Old Bakery, Bed & Breakfast and Self Catering

Accommodation, kenclynton@mail.com 630005

Peak Feast, Huge range of home-made cakes, pies,

ready meals, quiches, etc – call in to The Workshop,

Moor Lane, Youlgrave, www.peakfeast.co.uk 630000

Pilates classes - Flatten your core, Wed 6pm in

Youlgrave Village Hall, sheila@villagehallpilates.co.uk

www.villagehallpilates.co.uk 07971 566261

Iris Pimm, The Barn, Greenfields, Alport 07890 381155

Kathi Roche, Woodwind instrument repairs

kathirepairs@hotmail.co.uk, 636179

Barbara Scrivener, Reflexology, massage, Reiki

Youlgrave Garage – Motor engineers and MOT Test

Station 636943

Youlgrave Post Office, Church Street 636217

Zumba with Dave – exercise to fantastic music every

Tuesday lunchtime in Youlgrave Village Hall

www.davidpryor.zumba.com, email dpryor@supanet.com

COMMUNITY GROUPS & ORGANISATIONS

Granby House, Housing for older people 636123

Middleton & Smerrill Parish Council 636151

Youlgrave Beekeeping group 630202/636550

Youlgrave Bellringers

Contact David Camm, Tower Captain 636576

Youlgrave Carnival

youlgravecarnival@hotmail.com 077451 48993

Youlgrave Bowls Club, Mick Partridge 636066

Youlgrave Cinema 636836

Youlgrave Day Centre (Monday Club) at the Village

Hall, contact Shirley Brassington 636310

Youlgrave Horticultural Society

Contact Leslie Toyne, Treasurer 636484

Youlgrave Methodist Church 636558

Youlgrave Parish Church, The Vicarage,

Conksbury Lane, Youlgrave 630409

Youlgrave Parish Council 636151

Youlgrave Playschool

Monday-Friday, 9am-12 noon 07745 191366

Youlgrave School Association, fundraising for our

local school, contact Karen 636536

Youlgrave Scout & Community Hall 636887

Youlgrave Silver Band 630202

Youlgrave Village Hall 01629 828215

Youlgrave Welldressers 636341

Youlgrave Wesleyan Reform Chapel 636251

Youlgrave Women's Institute 636353

2016 Bugle sponsorship
renewal now due – see page 22.

Thank you to everyone who has
continued to sponsor and/or advertise
with us (including generous and
unnamed individuals) – it's our only
source of funding and ensures that the
Bugle is delivered free of charge to
every local household, every month.