



The

Bugle



**A chance to blow your trumpet for the villagers of
Alport, Middleton and Youlgrave**

No. 182

February 2016

Village recycling bins to be removed

Youlgrave's familiar recycling bins at the western entrance of the village are to disappear, after Derbyshire Dales District Council (DDDC) decided to close all its 'bring sites' across the district, citing the success of its kerbside recycling scheme and the rising costs of administering the 23 separate locations.

In a public consultation organised by the District Council at the end of last year, Youlgrave residents responded with a 428-name petition coordinated by the Parish Council that called for the recycling bins at Coldwell End to be retained, but instead District Councillors voted last month to close all the sites.

DDDC say that since improved kerbside recycling collections were introduced in 2012, the quantity of material collected from bring sites has reduced by 75%. They also claim that more non-recyclable items are being dumped at the sites, resulting in 43% of the material being contaminated and disposed of at landfill, which is costly for the council and the environment.

One of the reasons given by Youlgrave residents for retaining the village bins was to accommodate excess recycling material, so the Parish Council sought clarification from DDDC on its current guidelines. They responded by saying that additional material will be collected if placed at the side of the household recycling container and provided it is easily identifiable as recycling material



(use transparent containers or stacker boxes rather than black bags). Alternatively, extra bags can be provided for additional recycling if it's a regular issue (call 01629 761122 or email waste@derbyshiredales.gov.uk).

Please ensure different types of excess recycling is separated. Flatten and where possible remove staples and packaging tape from cardboard, as well as polystyrene and bubble wrap. Boxes and large pieces of cardboard should be flattened and placed next to the container for collection. If you regularly produce lots of excess recycling you should contact the Council at the above number to request an additional recycling bin. "We are always happy to discuss recycling options with our residents," said DDDC.

2016 Household Collection dates – see p.22

Bakewell Carpets

Wide range of carpets,
rugs and carpet tiles
Free fitting, free delivery

Free estimates
Home selection service

London House
Matlock Street
Bakewell DE45 1EE
Tel: 01629 814122

Simon Northcott

WILL WRITER

If you need:

- to make a **Will**
- help in **administering** an estate
- to make an **Asset Protection Trust**
- advice on **Inheritance Tax**
- to make a **Lasting Power of Attorney** or appoint a **Court of Protection Deputy**

I CAN HELP YOU

I am a member of the Society of Trust and Estate Practitioners and practise locally. I charge **£100 for a simple Will**, £150 for a couple and £100 an hour for other work.

HOME VISITS TO FIT IN WITH YOUR NEEDS

Email: simon.northcott@talk21.com
www.simonnorthcottwillsandprobate.co.uk

You can contact me on
01629 636523 or 07706 956067

J.W. & J. Mettam Limited

Family Funeral Directors
since 1899

Ambrose House,
Granby Croft,
Bakewell DE45 1ET

(01629) 812114

Member of Parliament for Derbyshire Dales:

Patrick McLoughlin MP

Telephone: 020 7219 3511

E-mail:

patrick.mcloughlin.mp@parliament.uk

Post:

House of Commons
London SW1A 0AA



- Supply & Fitting of all Domestic and Contract Carpets
- Supply & Fitting of Vinyl, Laminate & Karndean Flooring
- Supply & Fitting of Real Wood Flooring
- Supply & Fitting of Sisal and Natural floorings



- ❖ Guaranteed Workmanship
- ❖ Free Fitting Service
- ❖ Free Home Selection Service
- ❖ Moving & Replacement of Furniture
- ❖ Disposal of Old Carpet
- ❖ Customers' Own Car Park

43/47 High Street, Clay Cross, Chesterfield

Tel: 01246 863148



See our **WEBSITE** at: www.nutt.co.uk

VILLAGE NOTICEBOARD

Youlgrave-Bangbutt Village Link AGM

On Thursday 10 March
at 10.30am
in the Reading Room

FUN QUIZ & BINGO at the

FARMYARD INN

Friday 19 February
at 8.30pm

Have a pre-Quiz meal
Come along and have some
fun!

Youlgrave Reading Room

We need your support! We have a
GRAND SALE in the Spring –
money raised keeps the Room in
good condition, rent low, etc).

All items in good condition–
nothing turned away.

We will collect at your
convenience.

Please ring Eddie 636469
or Glenys 636477.

All Saints' CE (VA) Primary School,
Youlgrave

Clerk to the Governors

All Saints' CE Primary School, Youlgrave, is
seeking a reliable and independent clerk to
provide administrative support to the School
Governors. This will include organising and
attending meetings, which are usually held
early evenings on Monday. Training and
support for the role will be available. This is
a permanent paid post (1-2 hours a week).

For further details contact Youlgrave School
on 01629 636289 or email [chair@youlgrave-
allsaints.derbyshire.sch.uk](mailto:chair@youlgrave-all saints.derbyshire.sch.uk).

Craft & Gift Fair

in aid of Arthritis Care
on Saturday 27th February
at Over Haddon Village Hall
from 10am - 4pm

A range of stalls from the local area, hot &
cold drinks, cakes and a Raffle!

Free Entry - All Welcome

REFUGEE CRISIS!

It's winter and there is a desperate need
for clothing, sleeping bags, boots, shoes
- children and adults - for refugees in
Europe and Syria. Buxton Hummingbird
Project is central to this and I can collect
and deliver to them anything you can
donate that's in good, clean condition.
Ring Maggie on 636189.

Calling all fun-lovers

The **Reading Room Committee**
is delighted to invite you to an

EVENING OF FUN, QUIZ AND GAMES and Pie & Pea Supper

with our very own
Mick Partridge

Thursday, 3rd March

Supper served at 7.30 pm
Doors open 7pm

Bring your own beverage

Tickets £6.50, from the Post Office, or
Eddie Oldfield on 636469



Dear Editor

On a cold Monday morning in January our
car wouldn't start. Many thanks to John
Orchard who helped me to push the car to
bump start and then thanks to Richard at
the Garage who came to rescue our
abandoned car when bump starting
failed. It's great to see that community
spirit is still strong in the village. Many
thanks.

Alison Murray
Youlgrave

Report from Middleton and Smerrill Parish Council

Council met on 20 January and began by
discussing options for the future of the
village hall. It was agreed to ask for a lease
renewal at a community hall rent level before
considering other options.

Following the pollarding of the trees,
Council has arranged to have the algae
growth on the play area removed.

District Councillor Graham Elliott informed
the meeting of the closure of the DDDC
Youlgrave recycling facility and the
additional door to door recycling collections
(see full article in the Bugle). Council
thanked the District Councillor for his
personal assistance in making the Telephone
Box a Defibrillator Kiosk, which is now
registered with the Community Heartbeat
Trust and the Ambulance Service – if needed,
dial 999 to be given the code.

Council next meets on 16 March at 8.15pm.

Thanks for Crib Service 2015

*Many thanks to all those who took part in
the Crib Service and especially to Tracie
Brown (and April) and Stuart Ide, who
took on the role of Mary, Joseph and
Jesus just 36 hours before the event!
(Three previous offers had to withdraw
due to unforeseen circumstances.) I was
also overcome with the words of thanks
and the gift I was given for having
organised the Christmas Eve services for
the past 30 years. The gift was organised
by Charlotte and Ian, and was a
beautifully carved and painted wooden –
guess what – Nativity Crib Scene! I had it
displayed all over Christmas and it will be
treasured, and displayed, for the rest of
my life. Many, many thanks to all those
who contributed to it. Good luck to
Charlotte and Ian on keeping the
tradition going for the next 30 years!*

Barbara Scrivener

Elizabeth Lomas (1947-2015)

Elizabeth Lomas lived all her life in the Peak District, including Hartington, Elton and Youlgrave. She attended Youlgrave School and Lady Manners, then undertook teacher training for three years at Elizabeth Gaskell College in Manchester. Her first teaching position was at Mary Howitt Infant School in Heanor, from where she went on to become Deputy Head at Matlock Bath Primary School. Her first Headship was at Hazlewood First School and when appointed she was the youngest Head Teacher in Derbyshire. She was later Head Teacher at Fritchley Primary School and then Inkersall Primary School.

Elizabeth was very active in the local community, including Youlgrave Pantomime, Holywell Players, Peacock Players and Matlock Operatic Society. She was deeply involved in the Church, acting as Secretary for the Parochial Church Council and a member of the Deanery Synod and the Diocesan Board of Education.

After taking early retirement she joined Bakewell Floral Art Club and gained a reputation as a gifted and skilful flower arranger. She won many prizes for her displays, including at Youlgrave Horticultural Show and Bakewell Show, and she founded the Junior Flower Club. Elizabeth was on the Area Executive of the National Association of Flower Arrangement Societies (NAFAS) for eight years, finishing as Secretary, and enjoyed being involved with the organisation and going to NAFAS events around the country.

In her retirement Elizabeth was a dedicated and hard working Foundation Governor at All Saints School, Youlgrave, where she was a pupil six decades earlier. She was a wonderful Grandma to Jasmine, Isaac, Oscar, Astrid, Lucille and Noah, and will be much missed.



COURSES AT YOULGRAVE READING ROOM, SPRING 2016

Art (Botanical) Spring Flowers, Sat 5 March (10am–2pm), fee £22/£20/£11

This one day session is ideal for adults wanting to develop skills in detailed botanical art, with plenty of demonstrations, tips and advice. Some basic equipment is necessary.

Crafts – Floristry for Spring (new designs), Sat 12 March (10am–2pm), fee £22/£20/£11

A one day session for adults wanting to learn or develop floristry skills. The tutor has a number of new spring designs to introduce during this lovely session. Some basic equipment, flowers and flora are required.

Further details for both courses at www.derbyshire.gov.uk/coursesearch or by contacting the Bakewell Centre on 01629 813747, email bakewell.ace@derbyshire.gov.uk

Scout and Community Hall consultation with the community and user groups

The Governors of the '1933 Deed', set up by Herbert Leach for the benefit of 1st Youlgrave Scouts, met on 21 January to consider the first steps in the way forward to run the building constructed by the Scouts and community in 1993 that stands on the site of the wooden Scout hut. The current hall goes beyond the scope of the deed and Governors are proposing to modify the scheme to be relevant to its use by the Scouts and all other youth groups in Youlgrave.

As the Governors are the Charity trustees and therefore liable for running the charity, their first step has been to critically assess their own posts and they propose that the current fixed posts be made more flexible. Also, that some Governors should be replaced by bodies with active involvement.

In accordance with the wish of Herbert Leach for the Governors to represent five different bodies with a majority village-based, the following is proposed:

The village organisations be represented by:

- **Youlgrave All Saints Primary School** (as existing), representative to be the Head Teacher or a School Governor.
- **Youlgrave Playschool:** a major user and also a children's educator, so could replace the Head of Lady Manners/Vicar, represented by the Playschool Chair or a committee member.
- **A Community Governor:** elected from within the community by Youlgrave Parish Council, replaces the Chair of Youlgrave Parish Council.
- **Uniformed bodies:**
 - **Scout Association** (as existing)
 - **Guide Association:** a major user, to

replace Vicar/Lady Manners Head.

All Governors to be selected by their own organisation and registered as the five charity trustees.

Youlgrave Scouts is guaranteed a governorship in perpetuity and the right to use the building as their Headquarters.

If another organisation closes then the Governors may select another village youth user group to replace that Governor. If no other youth groups are using the hall then a further Community Governor is to be elected to serve until another village youth group is formed.

No youth group may have more than one Governor representing it.

Governors to appoint a Treasurer and Secretary and anyone else they deem needed to help manage the hall.

The Charity Commission requires the Governors to "resolve the issue of the status of the community hall for the benefit of the charity and the community" and to explain what has been agreed for the Commission to advise the Governors how to move forward.

Governors would like to receive your comments and suggestions on this proposal, with the consultation closing on 29 February 2016.

Please send your written comments to the Secretary to the Governors, Christmas Cottage, Church Street, Youlgrave DE45 1WL or email: youlgovernors@btinternet.com

Edwina Edwards awarded MBE

Congratulations to Youlgrave's **Edwina Edwards** (right), who was awarded an MBE in the New Year's Honours List for services to the community in Derbyshire. Edwina is Chief Executive of Bakewell & Eyam Community Transport, which helps people who struggle to use conventional public transport and is often a lifeline for elderly and disadvantaged residents. Born and brought up on the Staffordshire Moorlands, Edwina has lived in Youlgrave for many years and runs Youlgrave Brownies. Previously she was the County Commissioner for Derbyshire Girl Guiding.



Gardeners and Allotments Forum

Saturday 20 February

At Youlgrave Village Hall Community Room

9am-12.30pm

Entry is free



A time for sharing as the gardening year begins.

Seed Swap: We are not allowed to sell our seed (EU regulations), but we can swap it, so bring along your carefully labelled surplus to share. Also gardening magazines, books, ideas... and any other useful bits and pieces to give away or loan.

The **Youlgrave Beekeeping Group** will be represented. Come along and find out how you can sample this absorbing past-time over the summer on an informal basis. For anyone interested in learning more there will be a beginner's day course run by the Derbyshire Beekeeping Association at the Farmyard Inn on 27 February. For details and booking contact Judith Orchard on 630202.

There will be a representative from the well-established **Community Orchard and Fruit Garden** in the top allotments. If you would like to be a part of caring for this garden and sharing in the crops in future, please come along and let us know. Information about the new community orchard on Hannah Bowman Way is elsewhere in this magazine.

There will be a **notice board** to display coming events, questions and offers. Other ideas for inclusion welcome.

At present it is planned to have four Saturdays this year to share garden wisdom and later to sell seedlings and produce. This is a new venture to replace the popular garden stall from the Village Market. Please let me know if you would like to be involved by serving coffee, looking after the seed swap, etc. Many thanks, Jeni Edwards (636550).

THE WASH HOUSE

Stained Glass Workshop

Hand-made stained glass panels and gifts

Locally made handcrafted silver and copper jewellery

Drop in if passing – opposite 4 East View, Bradford Road, Youlgrave

Or call Alex on 07532 336378, email alexwoolton1@gmail.com

Granby House, Youlgrave

Do you live on your own and feel the need for more company and support, but don't want a care home?



At Granby House you can be as independent as you want. You can eat meals cooked by the staff, go on the many social events and treat your en-suite room as you would your own home. All rooms are connected to an alarm system and help can be summoned at any time of day or night.

If more assistance is needed, home help can be arranged. Financial support is available in the same way as it is in a private house. The weekly costs can be surprisingly modest.

If you are interested in hearing more about Granby House, please ring Pat Cleaver on 01629 636836 or email granbyhouse@gmail.com.

News from 100 years ago

Bakewell Cattle Market 10th January 1916

There were 260 animals for sale at the market, consisting of 169 beasts, 35 calves, and 56 sheep. Trade was slow with best quality milk & calving cows fetching £24; calving heifers £16-£18; barren cows & heifers £11-£14. Two year old bulls £16-£18; yearling bulls £11-£13, and yearling calves £6.-£7/10s. Fat heifers and bullocks 9s/6d to 10/- per stone. Store sheep 32/6d to 35 shillings. At the Derby Straw & Hay market best hay was realising £5/10s to £6. per ton with straw at £3 to £3/10s per ton. Potatoes 1/3d per peck; apples 1½d to 4d per lb; onions 1d to 1½d each and celery 1 1/2d to 2d per stick. Peaches 3d each. The January sales were on and Midland Furnishings, London Road, Derby, were offering a full size bedstead for 37s/6d. whilst at Midland drapery you could buy Gents wool motor scarves for 6 1/2d (usually 1s/3d) and Ladies white Mesino bodices for 1 shilling. H. Samuel, watchmaker to the Admiralty, were selling a wrist watch for 21 shillings with which you could 'tell the time at midnight as distinctly as by day'. They are proving a great boon in the trenches at the front – send one to your friend today! 'Cpl Stowell (RFA) had his H. Samuel watch SMASHED BY A GERMAN SHELL but even that did not stop it.' (NB There was not an Advertising Standards Authority in 1916!)

Reporting a War

Turn on the radio or TV nowadays, or open your newspaper and you are immediately faced with highly visual and descriptive reports of conflicts and casualties. A century ago when our armed forces were literally 'up to their neck' in muck and bullets things were different with newspapers being the most prominent source of news' This is a report from the Derbyshire Advertiser for 25 February 1916:

Weeping shells for the British Tuesday was a busy day for the artillery on the British Front. Poperinghe has been shelled during the night. The British devoted themselves to a bombardment of enemy trenches in the vicinity of Mariacourt, Orvilliers, and the Ypres-Comines road. Hostile artillery shelled the British position west of Ypres, many lachrymatory* shells being used. The British trenches north of Ypres between the Pilkem road and Ypres canal were also bombarded during the day. A mine sprang by the enemy east of Givenchy caused us no casualties and yesterday the British sprang a mine near the Hobenzollen redoubt occupying the lip of the crater.

** For the effects of lachrymatory (gas shells) see John Singer Sergeant's painting of 'Gassed' and read Wilfred Owen's poem 'Dulce et Decorum est'.*

Compiled by John Cooper, Youlgrave 1914-1918 Community Group

Wonderful Winter at Youlgrave Primary School

After a fabulous Christmas Break, all children have been so excited and engaged in our Winter topic. In Classes 1 and 2, we have focused on the lives of Inuit's and Arctic Explorers. The children have been so interested to find out more about Inuits, their culture, clothing, homes and lifestyles. Lizzie in Class 1 commented on our topic: "I love learning about Inuits and I like how they make igloos."



At the beginning of term, we looked at how Inuits build their igloo's as a place to stay when they are out hunting. "I liked looking at pictures of igloos, they are pretty!"

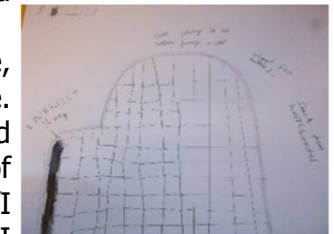
Alice from Class 1 shared. Through their interest and excitement, children decided they wanted to build their very own igloo in school. However, due to the lack of snow, we decided to be creative and design and build an igloo using empty 4-pint milk bottles!

Children worked in teams to design the structure, style and features they wanted the igloo to include. As you can see in the picture, the children worked very hard and put a lot of thought into the design of our igloo building project. Max from Class 2 said: "I liked looking how people build igloos in the Arctic. I can't wait to have fun in the igloo with my friends". The children hope to use the igloo as a place to read, take part in role play as Arctic explorers and during 'Golden Time' with friends.



Both classes worked hard in teams to collect milk bottles, clean the bottles and prepare the base for our igloo. We currently have built 4 layers and are so grateful to all the children's families for collecting the milk bottles.

If you have any spare empty 4-pint milk bottles, please pop them in to Youlgrave primary and see our fantastic work so far on our igloo.



BAKEWELL PET SUPPLIES



Free Local Delivery

Tel: 01629 814264

WHEN THE CLOCK STRIKES 3

TRADITIONAL
ENGLISH TEA SHOP



Located in the picturesque Spa Town of Matlock Bath our Tea Shop is in the heart of this beautiful community, with a choice of indoor and outdoor seating. Our ingredients are all locally sourced, with our produce freshly home-made in our kitchens.

PARTIES CATERED FOR

Either with private room hire or at your chosen venue

OUTSIDE CATERING
BUSINESS LUNCHES
FUNERALS, WEDDINGS
AND CHRISTENINGS

Visit us at

14, North Parade, Matlock Bath, Derby's, DE4 3NS

Tel: 01629 580547 **Mob:** 07975 631073

Follow us on:



*When The Clock Strikes 3
Everything Stops For Tea*

BAKEWELL OSTEOPATHY CLINIC

The conditions we can help you with include:

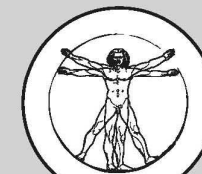
- HEADACHES & MIGRAINES
- NECK PAIN & WHIPLASH
- FROZEN OR STIFF SHOULDERS
- TENNIS ELBOW • SLIPPED DISCS
- REPETITIVE STRAIN INJURIES
- TRAPPED NERVES • LOWER BACK PAIN
- HIP, THIGH OR KNEE PROBLEMS
- POSTURAL CHANGES DURING PREGNANCY
- CHRONIC FATIGUE SYNDROME (ME)

The clinic is also a multi-disciplinary clinic and we offer the following therapies:

- OSTEOPATHY
- SPORTS MASSAGE
- HOMEOPATHY
- ALEXANDER TECHNIQUE
- NUTRITIONAL THERAPY
- HYPNOTHERAPY
- REFLEXOLOGY
- REIKI

CLINIC HOURS AND HOME VISTS:

The Bakewell Osteopathy Clinic is open each week day from 9.00am to 6.30pm (except Wednesdays) and every other Saturday from 9.00am to 2.00pm. We can also arrange home visits by special request.



BAKEWELL
OSTEOPATHY
CLINIC

www.bakewellosteopathy.co.uk

CALL PHIL HELER: 01629 329009 | 07980 930755

First Floor, Rutland Mill, Coombs Rd, Bakewell, DE45 1AQ

YOULGRAVE GARAGE

TEL: 01629 636 943



SERVICE
& REPAIRS



M.O.T.S



BRAKES



BATTERIES



EXHAUSTS



DIAGNOSTICS



AIR
CONDITIONING



TYRES

To read the Bugle in full colour, plus all the back issues and special editions (Bugle 2000, Mawstone Mine Disaster and World War II issue) go to:
www.thebugle.org.uk

And check out the village website
www.youlgrave.org.uk

www.youlgravegarage.co.uk

Tree planting at Hannah Bowman Way Community Orchard

At the end of last November the all.

sponsors of trees for the community orchard in Hannah Bowman Way ensure the trees are properly taken successfully planted care of and so the twenty eight fruit trees, which included different varieties of apples, plums, pears, damsons and one cherry tree. the orchard becomes a place that all villagers will be able to enjoy.

Before that, on Friday 27 November, all the children from Youlgrave School, together with their teachers and helpers, came to plant three trees, one for each class. As the years go by we hope the children remember the day they planted the tree and enjoy eating the fruit.

Other sponsors arrived on Saturday 28th armed with spades to plant their chosen trees. The day was successful on 01629 636994. with the last trees going in as the predicted heavy rain arrived to soak us



All Saints pupils at the school tree-planting on Hannah Bowman Way.



We were very lucky to be awarded a Big Lottery Awards for All Grant to help finance the work. It meant we were able to hire a mini digger to dig all the holes before planting day. Other money will be spent setting up rain water collection and equipment for the regular maintenance.

Anyone wishing to become involved in the orchard please get in touch with Chris Powley

Youlgrave Cinema presents: **Suite Francaise** (Cert 15)

Over 50 years after acclaimed novelist Irene Nemirovsky's death in a concentration camp, her daughter found the courage to read her journals. What she discovered was an incredible story. Set in the 1940s, Suite Francaise follows beautiful Lucille Angellier who awaits news from her husband, a prisoner of war, whilst leading a stifled existence with her domineering mother-in-law, played by Kristin Scott Thomas. When a regiment of German soldiers take up residence in Lucille's village her life is turned upside down. She initially tries to ignore Bruno, the handsome and refined German officer who has been posted to live with them. But soon, a powerful love draws them together and traps them in the tragedy of war. *107 mins*

Friday 12 February, 7.30pm, Youlgrave Village Hall
Free to members or £5 on the door

Help wanted for 'The Easter Experience 2016'

For the past two years we have had on display in church six tableaux, expressing the last week of Jesus' life, from Palm Sunday to Easter Sunday. Youlgrave school children visited it the first year (2014) and were so impressed that they asked if they could take part if we did it again. So, in 2015, the 'Easter Experience' (its official title) was repeated and the school children and teachers beautifully displayed three of the scenes. This year they wish to do it again. Are there any artistic, creative people in the village, who would like to help with the other three displays? You don't have to be a churchgoer. Offers of help and further information to Barbara (636601). Please support the School and church by visiting the Easter Experience. Follow the white footprints round the church in order to view everything in the correct order. The displays should be up from approx Tuesday 22 March to Monday 11 April. The church is usually open daily from 9am to 5pm. Happy Easter!

A day of Eggstravaganza!



The fun and popular Eggstravaganza for children will again be held in church on Good Friday, March 25th, from 10–11.30 am.

Children, come along and enjoy yourselves again this year! It will probably include egg painting, an Easter egg hunt, Easter card making, bun making, making an Easter garden, games, and more... and maybe feeding a lamb! Of course, there will be refreshments as well.

Enrolment forms will be available at school sometime in March. Children under 5 years old will have to be accompanied by a parent, or responsible adult. Other parents are welcome to stay if they wish. Hope to see you there!

Get online for free @ YVH

Youlgrave Village Hall has been appointed as a UK Online Centre (centre no. 3457390), one of 5000 centres providing free computer access to help you get online and using the Learn My Way online courses to support and teach computer skills for beginners. With over 20 course modules available, each is designed for individual learning, so you can work at your own pace and we will have support on-hand to give you friendly and expert guidance.

We are running a series of sessions, during March and April, and want to invite anyone and everyone to come along and take part. If you've got a spare hour, we're on hand to show you how getting online could save you time, hassle and even money. Whether you want to get healthy, get connected, get a job or get a bargain, you could be doing it all – and more – by doing it online.

It doesn't matter if you've never even touched a computer before or if you already know a bit – this is your chance to give computers and the internet a go. It's fun, it's free, and it could change how you do your favourite things – and your everyday chores – forever!

Either bring along your own laptop or tablet or use one of ours for each session in the Social Room at the Village Hall. If you are interested in coming along, call the Village Hall on 01629 828 215 to book a place on one of our free sessions on Thursday afternoons during March and April 2016.

We're part of
UK onlinecentres™



Please support the Bugle in 2016

It's that time again when we invite local businesses, community groups and individuals to renew their back page sponsorship for the year ahead. Rates remain unchanged for another year, at £25 for businesses and £20 for community groups and individuals, although donations of any size are always welcome! Thank you for your support, which enables The Bugle to remain a free community publication.

BUGLE SPONSORSHIP 2016

£25 for businesses/local authorities OR **£20** for individuals and community groups

Name

Address/tel no

Optional one-line description & contact details:

.....

*Please make cheques payable to **The Bugle** and deliver or send them, together with this form, to Ann Knowles, The Garden House, Fountain Square, Youlgrave DE45 1UR. You will be sent a receipt. Thank you.*

More news from 100 years ago...

“Put That Light Out!”

Whilst we tend to think of the ‘Black Out’ being in force during World War 2 there were lighting restrictions during WW1. In early February 1916 in a Zeppelin raid some 220 bombs were dropped in six counties (including Derbyshire). 54 people were killed and 67 injured. Following this the air raid, and with powers transferred by Regulation 11 of The Realm (Consolidation) Regulations 1914, an Order as to the Lighting in the Borough of Derby was introduced which reduced lighting in stations, shops, hotels and home-steads. Train passengers had to keep the (window) blinds lowered. Car headlights could show no more than 2” across. Street lighting was to be discontinued and the kerbs were to be whitened along with the painting of white circles on lamp-posts.

The Youlgrave 1914-1918 Community Group

Church Farm Diary, February 2016



I hope everyone has coped with the wet weather. About 15 years ago we had a problem with the sheep in the floods. In the field at the bottom of Raper Lane the river broke its bank and the sheep were stranded on the river bank. Michael,

Dakin, Luther and Elizabeth and I went down with the tractor and trailer and quad hoping to load the sheep up and bring them back to higher ground. When I got off the tractor I went up my waist in cold water, because when the field flooded it looks flat and I had forgotten that there was a ditch just before the river bank! We had decided to load the sheep up, but not realising that sheep don't do as they are told, they would have either gone into the river on their left or turned and gone into the flooded field. Luckily they turned and started to swim across the field! It was quite a sight to see all the sheep swimming and all of us wet though. Michael had a hole in his wellingtons, not that it mattered as we could have gone in sandals and would have still have been as wet.

I feel very sorry for all the people that have been affected by the floods, to have all that water coming into your house must be terrible – we are lucky to live on a hill. In the past I have seen it very bad at the bottom of Bradford, where the houses were affected.

Dakin's cattle have had the T.B. test and have come through clear. This is always a worry as it is very restricting if you fail.

The milk price is still on the floor and the world situation does not help. I read in the Farmers Guardian that New Zealand send 300,00 litres of dried milk powder over to China. New Zealand have a lot of very big milk herds.

The cows have started calving so this is bringing the milk production into a good cycle, with some cows drying off and some in full milk.

Marjorie Shimwell

RECIPE OF THE MONTH

Brown Sugar and Hazelnut Shortbread

This shortbread is one of my favourite cakes to eat and this recipe is just a little different.

Ingredients

190g soft butter
120g soft light brown sugar
A few drops of vanilla extract
50g chopped hazelnuts
280g plain flour
1 egg yolk

Method

Put the butter and sugar in a bowl and beat together. Add the hazelnuts and vanilla, flour and egg yolk and combine altogether. Tip the mixture into a greased sandwich tin and squish it all out into a flat layer.

Put it into the freezer for 15 mins to firm up or fridge for 30 mins.

Bake in oven for about 25 mins on gas 4 or 350 F.

The shortbread should be firm and light golden in colour. Dust with caster sugar and remove from tin when cool, then cut into wedges.

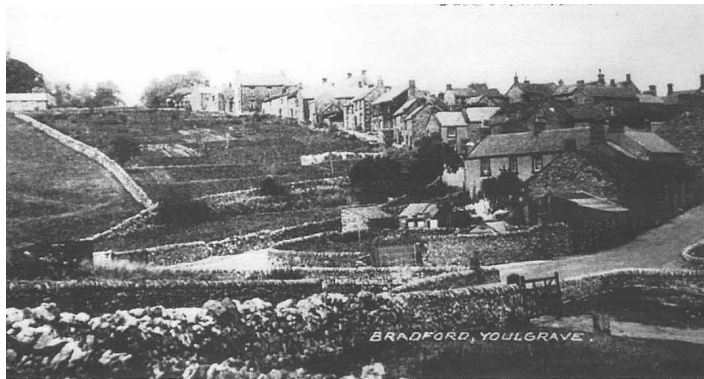
Marjorie

A Youlgrave history walk, part 8: Down Bradford

By retired architect
Peter Knowles

Walking down Bradford from Church Corner is a pleasant visual experience, as the distant countryside comes into view over the rooftops at first, then opens out to the west opposite Mount Pleasant and then to the east near Braemar House. Bradford Road winds its way down to the River Bradford ('broad ford' the first crossing), bridged over in the 18th century, leading to Mawstone Mine, Mawstone Farm, Hopping Farm and over the hills and faraway to Gratton, Elton and other exotic distant places.

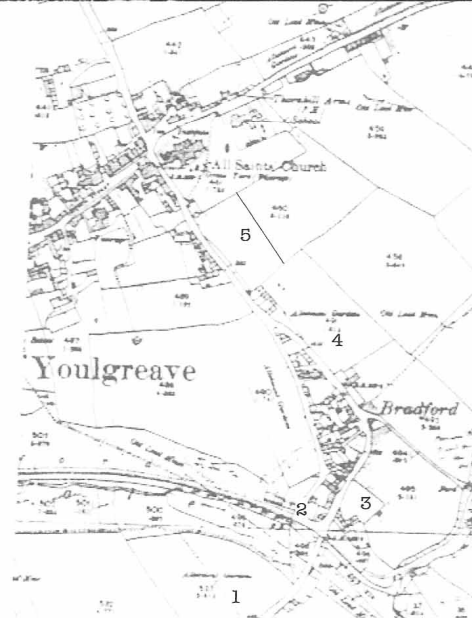
Mawstone Lane starts on the west side of the bridge, although Google Maps shows it mistakenly starting at the top junction with Stoneyside. An ancient packhorse trade route from the south crossed the river where Braemar Bridge is now located, and headed up to the Church via Bradford Rd. Stoneyside is the steeper and straighter route down to the river by the clapper footbridge. The two roads diverge at what is now Owl Cottage, a barn conversion. The space between Bradford Road and Stoneyside was perhaps too narrow to farm and was used for small cottages and sheds, forming a small settlement called



(above)
view of Bradford
approx. 1900

(right)
O.S. map of
Bradford 1900

1. allotments, site of 1930's Mawstone Lane Council Housing
2. Riverside, site of 1930's private houses
3. site of Council houses late 20th C
4. Allotments, site of Brassington Close private houses 1960's
5. Site of Mount Pleasant private houses 1930's and 1960's



Bradford some 200m (an eighth of a mile) below the main village.

Buildings before 1900

One of the oldest houses is Top House (on the right, just below where the temporary doctor's surgery used to be) and is dated 1725, although it's not a Listed Building. Originally it had a thatched roof, as did Ivy Cottage further down the road on the left; as evidence of this note the original stone 'flashings'



Stoneyside

on the neighbouring gable wall to protect the end of the thatch – these are now well above the thinner tiled roof which replaced it.

There are four Listed Buildings of Architectural or Historic Interest down Bradford, all Grade II category and dating from the 18th century: 1. Ivy Cottage, 2. Woodside View (both addresses are wrongly given on the official list as Mawstone Lane, now called Bradford Road), 3. the clapper footbridge, and 4. the road bridge over the river (see photos).

Comparing the two maps shown in 1799, the narrow 'island' between Stoneyside and what is now Bradford Road was built up chiefly on the East side, presumably with lead-miners' and farmworkers' cottages and sheds. By 1900 the west side had become built up. The 'island' is now choc-a-bloc with a high-density layout crossed by

alleyways. It is an attractive old settlement of about 35 attractive 2-storey dwellings. Very few have house numbers and sometimes new owners change the names so it's difficult to find them.

Buildings after 1900

The allotments east of Bradford Road have been largely taken over by Brassington Close in the 1960s (low-density layout of bungalows) and Mount Pleasant (medium density layout) - six pairs of semis, four in the 1930s, plus two at the bottom in the 1960s. The semis are raised well above road level and dominate the view. There is rear access for vehicles. The only allotments which remain down Bradford are the Church allotments west of Stoneyside, mainly domestic now except for Dougie Oldfield's large vegetable patch.

The Rural District Council built 12 pairs of semi-detached houses and a terrace



Meadows Reach, Bradford



Dale Cottages, Bradford



Top House, Bradford

of four houses on allotments at Mawstone Lane, a total of 28 dwellings, in the 1930s. The exposed site was not ideal, it was outside the village on the wrong side of the river, but I assume it was cheap land to build on. The houses are laid around a central street. The semis are prominent from the Dale on this raised site. It's a long walk to Church corner up a steep hill. At that time, very few of the residents would have had a car, so they were isolated from the village school, pubs, churches, the Co-op department store and shops, apart from a general grocery shop down Bradford. This was run by Nona Webster in the 30s and 40s. She lived in a cottage adjoining Woodside View and this branch of the road was locally known as 'Nona's-side'. It was later run by John Stevenson. It closed a few years ago and was rebuilt as an annexe to Woodside View. Cars make it much easier for the present residents to reach village amenities and to go further afield.

The Dale was a good place for children to play (see Lillian Clark's testimony in 'A River in Time,' the excellent book on the Bradford by Christine Gregory, Grafika Ltd 2013). Five council houses were built in a tight group next to Riverside View in the 1980s.

Old roadside limestone walls contribute to the village character, but gaps are appearing in them to allow off-street parking. It would be a pity if many walls disappeared for this reason or for lack of maintenance, for they are part of the historic fabric. As elsewhere in Youlgrave, on-street parking is a modern problem, especially down Bradford where parked cars make it difficult for increasingly large touring caravans, farm vehicles, etc, to get through. Several holiday cottages are located in this picturesque area. Outsiders can buy them, the free housing market applies. However, several of these cottages are small and unsuitable for local families with children, hence the recent need to build local need houses on Conksbury Lane (Hannah Bowman Way) for the village as a whole.

I like the houses that face south alongside the road - this is a traditional orientation affording maximum heat from the sun, an eco-friendly arrangement nowadays, especially when coupled with a north side which has few or no windows. They usually have a blank gable-end close to the street which helps to punctuate the townscape, in contrast to a line of buildings parallel to the road. Examples of this down Bradford are Woodside View, Thorneycroft House (gable-ends to both streets), Braemar House, Daisy Bank, Riverside terrace and Dale Cottage terrace (no. 1 has a neat modern extension touching Bradford Road at an angle).

My thanks to Lillian Clark, Dougie Oldfield and Stan Roper for their help.



(from top) Mawstone estate
Riverside houses
(compare with 1900 photo)
Cottages new and old
Mount Pleasant



the 4 Listed Buildings down Bradford
(from top) Ivy Cottage
Woodside View
Road bridge
Footbridge

Wednesday - Week 2

Your collection day
is a **Wednesday**

Please put all your
containers out by
7am on your
collection day

Food caddy
Grey bin or black sack

Wednesday 9 December 15
Wednesday 23 December 15
Thursday 7 January 16
Wednesday 20 January 16
Wednesday 3 February 16
Wednesday 17 February 16
Wednesday 2 March 16
Wednesday 16 March 16
Thursday 31 March 16
Wednesday 13 April 16
Wednesday 27 April 16
Wednesday 11 May 16
Wednesday 25 May 16
Wednesday 8 June 16
Wednesday 22 June 16
Wednesday 6 July 16
Wednesday 20 July 16
Wednesday 3 August 16
Wednesday 17 August 16
Thursday 1 September 16
Wednesday 14 September 16
Wednesday 28 September 16
Wednesday 12 October 16
Wednesday 26 October 16
Wednesday 9 November 16
Wednesday 23 November 16
Wednesday 7 December 16

Food caddy
Green-lid bin or garden waste sack
Blue-lid bin or blue box & bags

Wednesday 16 December 15
Thursday 31 December 15* (see below)
Wednesday 13 January 16
Wednesday 27 January 16
Wednesday 10 February 16
Wednesday 24 February 16
Wednesday 9 March 16
Wednesday 23 March 16
Wednesday 6 April 16
Wednesday 20 April 16
Thursday 5 May 16
Wednesday 18 May 16
Thursday 2 June 16
Wednesday 15 June 16
Wednesday 29 June 16
Wednesday 13 July 16
Wednesday 27 July 16
Wednesday 10 August 16
Wednesday 24 August 16
Wednesday 7 September 16
Wednesday 21 September 16
Wednesday 5 October 16
Wednesday 19 October 16
Wednesday 2 November 16
Wednesday 16 November 16
Wednesday 30 Nov 16
Wednesday 14 Dec 16

*Grey Bin/Black
Sacks, Blue-lid
Bin/Blue Box &
Bags and Food
Caddy will be
collected on this
date. No garden
waste collection.

Bank holiday collection arrangements

Youlgrave Wildlife Notes: December 2015 & January 2016

Even in the middle of winter it is usually possible to find some wild flowers in bloom. My pre-writing walk on 25 January found seven species, including white deadnettle and lesser celandine, though none were numerous and they were not just isolated plants. In spite of the very mild weather I am relieved to say that we do not seem to have large quantities of daffodils and other plants that have seen blooming elsewhere. While flowers have been scarce there has been a very good bird count throughout the winter.

Back in early December there were lots of redwings and fieldfares around New Road and a blackcap was reported down Conksbury Lane feeding on tiny grapes on an ornamental vine. These warblers used to be only summer visitors but, along with chiffchaffs,

increasingly over-winter. The winter thrushes seemed fairly scarce in the village; later on, though, I did see some large flocks higher up. Presumably there was plenty of food for them. However both redwings and fieldfare descended on the village again at the bottom of Moor Lane on 21 January making the most of windfall apples.

Above the village gulls, particularly lesser black backs, have been feeding in large numbers. Along the river all of our key species – kingfisher, dabchick, grey wagtail and dipper – have been seen consistently. My best view of the kingfisher was on 14 January when I watched it fishing from the swing fence above Holywell Lane. It dived and swam around for a few seconds, rather like a

dipper, before it returned to its perch. There have been two dabchicks, mainly on the pool above the third dam, but not keeping together. I did see one of them struggle for some time with a fish before it managed to swallow it. Dippers seem to be in short supply at the moment, but earlier on have been singing and two were seen chasing each other. A grey wagtail has been around most of the time. Tufted ducks have been resident this winter. My best count was four pairs on 13 January, but numbers have varied.



Grey wagtail

Small numbers of mistle thrushes have been above Braemar Lane and a song thrush was singing at the bottom of Holywell Lane on 9 January.

Another hint of spring was a woodpecker drumming in the Dale on 11 January. Garden birds are doing well, with lots of finches and tits, including long tailed tits and the

occasional greater spotted woodpecker. Feeders provide a useful food source and give a lot of pleasure, but there have been cases of Trichomonosis, particularly in greenfinches. The birds look fluffed up and poorly. Feeders and bird baths should be cleaned regularly and if you do see affected birds in your garden the advice from the RSPB is to stop feeding for three weeks.

My thanks for reports from Joy, Simon, Ruth and Mick and the New Road Birders.

Ian Weatherley
email48iweatherley@gmail.com, phone
01629 636350

PEAK FEAST

Flavours you'll never forget

The Workshop, Moor Lane, Youlgrave

We now have a variety of fresh breads delivered daily from our new supplier, Jacksons of Chesterfield. Regular orders welcome. We stock a great selection of local cheeses and a range of crackers & biscuits. Perfect to enjoy with our homemade range of chutneys.

We have fresh fruit & vegetables and an expanding range of quality groceries. Bakers of a huge range of cakes, Homity pies, gluten free products, luxury ready meals, quiches and much more to both the wholesale & local market

Mon-Fri 9am-5pm, Sat 9am-12.30pm

www.peakfeast.co.uk dawn@peakfeast.co.uk

01629 630000 Find us on facebook

Anne Hunt Driving School

Driving Tuition

New Drivers

Refresher Courses

Pass Plus registered
30 years experience

Lavender Cottage
Fountain Square, Youlgrave
annie@paua.fslife.co.uk
01629 636162 07792 059129

David Kenworthy – Joiner

All types of joinery work undertaken

FREE QUOTATIONS

- Glazing
- Doors & windows
- Garden Decking
- Flooring
- Purpose made joinery
- Fitted Kitchens
- Fitted Furniture
- Any General Home Maintenance Work, no job to small

Rose House, Youlgrave, Derbyshire
DE45 1UT

Call David: 01629 636574

Mobile 07791 185536

CARPET & UPHOLSTERY CLEANING

Soil Protection & Deodorizer



Ants Carpets

Carpets supplied, fitted & refitted

NO JOB TOO SMALL

Ant 01433 621617

R. J. MELLOR ELECTRICAL CONTRACTORS

*Professional, reliable &
reasonably priced*

Fully qualified and insured 27 year old Electrical Installer, Inspector and Designer with over 10 years experience working in all areas of the electro-technical industry.

Thank you for your consideration.

Mobile 07816 985291

Email: rjmellorelectricalcontractors@hotmail.com



MVE Soft Furnishings

For quality, hand finished curtains
& soft furnishings

Web: www.mvesoftfurnishings.co.uk
E-mail: enquiries@mvesoftfurnishings.co.uk
Tel: +44 (0)771 026 7626

Chris Hancock

Plumbing & Heating Engineer

Gas Safe registered

01629 636455

07595 219256

R. Stone – Joinery

All types of joinery work undertaken
FREE QUOTATIONS

- Glazing
- Doors & Windows
- Hardwood/Softwood
- Flooring
- Purpose made joinery
- Fitted Kitchens
- Fitted Furniture
- Made to measure bespoke kitchens

3 Ivy Lane, Elton, Derbyshire DE4 2BX

Call Rob Stone on 07971 815683

Enjoy an evening of music and poetry – Spring is in the air!

Join us for an evening of music and poetry on the themes of Spring and love, at Youlgrave Village Hall on Friday 4 March.

The popular chamber choir, the **Wyns Tor Singers**, will perform well known madrigals and folk songs, along with classics from the Rock and Roll era. The songs will be interspersed with a miscellany of poems on the same themes.

Doors will be open from 7pm for a 7.30pm start and tickets at £8 will be available from Parkers Butchers and Peak Feast, or can be reserved by phoning 636580.

This is a bring your own food and drink event, but cutlery, crockery and glasses will be provided. Proceeds are for the Youlgrave-Bangbutt Village Link Sierra Leone projects of clean water and mother and infant health care.

Carol Singing

The Bangbutt group's carol singing around the village in December raised £170. The committee would like to thank everyone who contributed to this.

www.youlgravebangbutt.org



Wyns Tor Singers

Report from Youlgrave Parish Council

Council met on 19 January and discussed issues concerning parking at Fountain Square, the slow response to crucial street light repairs and the removal of the recycling facility (see the full article in this issue of the Bugle for more information about increased doorstep collections). Council supported Long Rake in its redevelopment planning application and thanked District Councillor Graham Elliott who has provided a grant to install a bench at the west side of the Conduit Head ('Fountain'). It welcomed the repairs to the footpath at Alport and continues to liaise with the Peak Park Ranger to provide additional improvements to local public footpaths this year.

A report was received that during the recent snow grit bin salt was used inappropriately. Please remember that the grit in our bins is for the footpaths and highways only. Your Parish Council sells grit to parishioners at a reduced rate via Youlgrave Garage for private drives and paths. The next meeting is on 23 February at 7.15pm in the Village Hall Committee Room.



February full to the brim

February will be brimming over... as our W.I. has literally filled up this year, and our many new members are warmly welcomed to our fold! Our December party was a great event, with music, laughter, food, wine and dancing to suit everyone. The Chatsworth Christmas visit was very popular, with Toad grinning down at twenty five happy ladies, and at the Group Carol Service, Lucy read a unique version of 'The night before Christmas'.

January began well with our new members swelling the numbers to capacity. The speakers, Terry and Carol, from Matlock First Responders, not only demonstrated and explained the procedure when using the defibrillator, but advised us on their key role as volunteers when attending a patient, and acting as backup for the Paramedics. We were shown the secrets of the 'goody bag' kept by all responders, and understood the different levels of Response, and techniques applied in emergency situations such as cardiac arrest and strokes. A vital and very clearly presented talk to start off this jam-packed year.

Our trip to Showboat, with friends and family, was as fantastic as last year's theatre outing, and the first 2016 Supper Club kept us occupied with box-making and a huge display of amazing crafts on offer from Lynne Nolan, who runs workshops in the village. As usual, Jean's pies and peas were superb!

Many outings and plans are afoot this year, including tea parties, our area




Members, family and friends outside the Crucible after a wonderful show.

Group Meeting, a Sardinian evening, yoga, our village Pantomime, and a lovely spring lunch at the Riverside Hotel.

February's meeting is on Tuesday 9th, at 7.30pm at the Village Hall, when Jill Roberts will be speaking to us about Life in the Diplomatic Service. The Craft Group has settled into the Committee Room, and will meet on February 1st and 15th at 2pm. Book Group is still thriving, and our monthly Competition is enjoying a revival. February Supper Club will be a special supper on the 25th at The Red Lion, Birchover.

Many thanks to all of our keen members and 'behind the scenes' teams, past and present, without whom Youlgrave W.I. would not be the success that it is today.


Liz Hickman



What's On @ Youlgrave Village Hall


yv.h.org.uk 01629 828 215 Reg Charity: 520538

Don't Forget



Every Monday from 8th Feb, 10:30am onwards

Weekly social club for the elderly with a freshly cooked lunch, refreshments, activities & entertainment. For more information call Shirley Brassington on 01629 636 310




Every Tuesday, from 9th Feb, 1:30pm

Great exercise to brilliant music – no need to worry about being able to dance – just follow along and have fun. For more information contact David at dprior@supanet.com

Plus all the weekly regular classes including Pilates on Tuesday Morning & Wednesday Evening, Eley Bootcamp on Thursday evenings..... Find out more at yv.h.org.uk

Community Room £1/hour Scheme Extended to include the Social Room

We want to extend the support we are giving to the development of community clubs, hobby groups and societies, so we are pleased to announce that we are extending the special pricing we already have for the Community Room to include the Social Room too. The rate for self-managed voluntary groups, organised within and open to our community to join but not commercial or publicly funded is now £1 per hour (minimum hire period of 3 hours).



Youlgrave Village Hall St George's Day Sale

23rd APRIL 2016, 10am-2pm

Stalls to shout about,
with something old &
something new.....

To book a table call Judith on 01629 636 492

A massive thank you to the cast, crew and to you our audience for making this years fundraising pantomime such a success.

www.yv.h.org.uk | @YoulgraveVH | enquiries@yv.h.org.uk | 01629 828 215

Registered Charity: 520538. Holywell Lane, Youlgrave DE45 1UT

Phil Beer in concert, 31 March

PHIL BEER is coming to Youlgrave Village Hall on Thursday 31 March at 8pm. Tickets, price £14 each, are available from Anne & John Cooper, call 630282 or email jlac784@hotmail.com.



We have seen Phil many times, both solo and with his colleagues in 'Show of Hands'. Every show seems to be even better than the last and they have played (and filled) the Albert Hall a number of times, so this is a great opportunity to see and hear him. Here are some of his recent reviews:

"A Phil Beer gig is one spent in the company of a true craftsman, a master musician and consummate performer" – Spiral Earth

"A Phil Beer solo gig is far more than a folk concert. As well as a raft of fantastic anecdotes, he dropped in on a range of American greats: Hoyt Axton, Billy Joel, Bruce Springsteen, Steve Earl and blues legends, Reverend Gary Davis and Blind Willie Dixon" – Nottingham Post last year

SHEFFIELD CITY HALL CONCERTS

Saturday 12 March
**ORCHESTRA OF THE AGE OF
ENLIGHTENMENT**
This Concert is now fully booked

Friday 20 May
**MOSCOW STATE SYMPHONY
ORCHESTRA**
Pavel Kogan, conductor
STEPHEN JOHNSON Behemoth Dances
RACHMANINOV Rhapsody on a theme
of Paganini
SHOSTAKOVICH Symphony No.5
The May concert may seem a long way off,
but already several seats are booked!

As usual the coach will pick up at 5.30 pm
from the top of Holywell Lane, and then at
the George Hotel.

Joy 636868, John 636721

The Derbyshire Singers with Lewisham
Choral Society present

'Elijah' by Felix Mendelssohn

Lorna Anderson (soprano), Catherine Wyn-
Rogers (mezzo), Andrew Mackenzie-Wicks
(tenor) and Gavan Ring (bass)

**On Saturday 12 March at 7.30 pm,
Highfields School, Matlock**

Tickets £15/Concessions £13/Free entry for
under-16s (accompanied by a paying adult) and
students. From Robert Young Florists in
Matlock, Natural Choice in Ashbourne (01335-
346096) or at www.derbyshiresingers.org.
Tickets will also be available on the door.

For their Spring Concert The Derbyshire
Singers are again joining forces with the
Lewisham Choral Society and a star cast of
soloists and musicians to perform Felix
Mendelssohn's great oratorio 'Elijah'.

www.derbyshiresingers.org

Office space available with DDCVS

Office accommodation available for a small business or voluntary organisation:

- Up-to-date ICT, including Wi-Fi and fast Broadband
- High quality photocopying and network printing
- Use of meeting rooms
- Dedicated, direct-dial phone numbers
- Free car parking for staff, volunteers and visitors
- Kitchen and toilet facilities
- A friendly working atmosphere
- A location in Bakewell at the Agricultural Business Centre, a short walk from the town centre.

Terms are negotiable depending on your requirements, so please contact Janet on 01629 812154 or email janet@ddcvs.org.uk



Zumba with David

Fantastic exercise to brilliant music:

Salsa, Bachata, Cumbia and lots more besides!

'But I can't dance' Don't worry!

'I've got two left feet' It just doesn't matter!

Just come along and have fun!

Youlgrave Village Hall Tuesdays 1.30 - 2.30pm

All sessions £4.50 no booking, Just come along and join in!

For the latest information on dates and times visit

www.davidpryor.zumba.com

Contact dpryor@supanet.com



ANNUAL SPONSORS: COMMUNITY GROUPS & ORGANISATIONS, contd

Youlgrave Methodist Church	636558
Youlgrave Parish Church, The Vicarage, Conksbury Lane, Youlgrave	630409
Youlgrave Parish Council	636151
Youlgrave Playschool	
Monday-Friday, 9am-12 noon	07745 191366
Youlgrave School Association, fundraising for our local school, contact Karen	636536
Youlgrave Scout & Community Hall	636887
Youlgrave Silver Band	630202
Youlgrave Village Hall	01629 828215
Youlgrave Welldressers	636341
Youlgrave Wesleyan Reform Chapel	636251
Youlgrave Women's Institute	636353

Youlgrave Medical Centre

For appointments, enquiries, home visits and repeat prescriptions call (01629) **636207**.

SURGERY HOURS

Monday	8.30am - 12pm, 2pm-6pm
Tuesday	8.30am - 1pm
Wednesday	8.30am - 1pm
Thursday	8.30am - 12pm, 2pm-6pm
Friday	8.30am - 1pm

CONSULTATION HOURS

Monday	9am - 11am, 4pm-5.30pm
Tuesday	9am - 11am
Wednesday	9am - 11am
Thursday	9am - 11am, 2pm-5.30pm
Friday	9am - 11am

REGULAR LOCAL EVENTS

Mondays	Monday Club (Day Centre), Youlgrave Village Hall, 10am-3pm
Tuesdays	Art Club, 10am-12 noon, ring 630407 for details of venue
Tuesdays	Yoga with Iris Pimm (636341), The Barn, Greenfields Farm, 7-9pm
Tuesdays	Youlgrave Bell Ringers practice night, All Saints Church, 7.30-9pm
Tuesdays	Scouts 7-8.30pm, Scout & Community Hall
Mon-Fri	Youlgrave Playschool, Scout & Community Hall, 9am-12 noon
Weds	Art class at Youlgrave Reading Room, 10am, with Diane Kettle (636763)
Weds	Bingo, Youlgrave Reading Room, 7.30pm
Weds	Beavers & Cubs, 5.30-6.45pm, Scout Hall, 7.45pm (term time)
Weds	Pilates, Youlgrave Village Hall, 6-7pm
Thurs	Yoga with Iris Pimm, 9.30-11.30am Beginners class 7-8.30pm, The Barn, Greenfields Farm (636341)
Thurs	Art class at Youlgrave Reading Room, 2-4pm, with Diane Kettle (636763)
Thurs	Youlgrave Silver Band, Methodist School Room, 7.30-9.30pm (learners at 7pm), all welcome
2nd Tues	Youlgrave WI meetings, Youlgrave Village Hall, 7.30pm (636353)
3rd Tues	Youlgrave Parish Council meeting, Village Hall Committee Room, 7.15pm (636151)
2nd Fri	Mobile Library, Grove PI 3.30- 4pm
4th Wed	Confidential Advice Sessions with Matlock & District Citizens Advice Bureau, Youlgrave Medical Centre, 9.30am-12.30pm

Pilates Classes

Achieve a flatter firmer stomach, strengthen the muscles
that support the spine & address postural imbalances



Youlgrave Village Hall

Wednesdays
6.00 - 7.00pm Beginners
7.15 - 8.15 Intermediates

£41.00 for a course of 7 sessions
paid in advance £8.50 pay as you go



Village
Hall PILATES

Sheila Wagstaffe Cert Ed FE, CYQ Pilates
07971 566261

sheila@villagehallpilates.co.uk
www.villagehallpilates.co.uk



THE BUGLE: Andrew McCloy (Editor), Englemere, Brookleton, Youlgrave,
Derbyshire DE45 1UT tel 01629 636125

e-mail andrew.mccloy@btinternet.com www.thebugle.org.uk.

Printed by Greenaway Workshop, Hackney, Matlock (tel 01629 734089).

The views in this publication are not necessarily those of the editorial team.

ANNUAL SPONSORS: BUSINESSES & PROFESSIONALS

Aloe Vera For You, your local agent for Forever Living Products – Aloe Vera & Beehive products
lisabingham123@btinternet.com, 07855 856948

Amy's Dairy, for delivery of fresh milk, free range eggs, cream and fruit juices on your doorstep
636639 & 07799 880740

Bakewell Bridge Car Park (M. & D. Rhodes),
Coombs Road, Bakewell 636453

Dave Brown, Plastering and Home Maintenance
630474 & 0777 3045148

Bulls Head 636307

Church Farm 636111

Derbyshire Aggregates
www.decorativeaggregates.com 636500

Dulux Design Service, your local interior designer
Chris Read 07817 169625
www.duluxdesignservicepeakdistrict.co.uk

Graham Elliott, Derbyshire Dales District
Councillor 636943 (office) & 636318

Farmyard Inn 636221

Chris Hancock, Plumbing & Heating Engineer, Gas
Safe Registered 636455 & 07595 219256

George Hotel 636292

Hopping Farm Caravan Site (Mrs M. Frost) 636302

Anne Hunt, Driving School – Beginners, Refresher
courses, Pass Plus 636162

Lathkill Cleaning, Holiday and domestic cleaning
service, property management and laundry service
contact lathkill-clean@outlook.com or 07973 374429

Long Rake Spar Co Ltd, The largest selection of
decorative stones for all your garden projects 636210

J.W. & J. Mettam, Family Funeral Directors since
1899 812114

Simon Northcott, Will-making, estate administration,
inheritance tax advice, lasting powers of attorney
simon.northcott@talk21.com, 07706 956067

Judith Orchard, Tailoring, repairs, alterations, dress
designs (proceeds to Bangbutt) 630202

T.Nutt & Sons, Supply and fit carpets, vinyl, wood,
laminated and karndean www.nutt.co.uk 01246 863148

The Old Bakery, Bed & Breakfast and Self Catering
Accommodation, kenclayton@mail.com 630005

Peak Feast, Huge range of home-made cakes, pies,
ready meals, quiches, etc – call in to The Workshop,
Moor Lane, Youlgrave, www.peakfeast.co.uk 630000

Pilates classes - Flatten your core, Wed 6pm in
Youlgrave Village Hall, sheila@villagehallpilates.co.uk
www.villagehallpilates.co.uk 07971 566261

Iris Pimm, The Barn, Greenfields, Alport 07890 381155

Kathi Roche, Woodwind instrument repairs
kathirepairs@hotmail.co.uk, 636179

Barbara Scrivener, Reflexology, massage, Reiki
636601

Smerrill Grange, Bed & Breakfast 636232

Val and Trevor Smith, Willow Cottage, Coldwell End/
Charente, France

Youlgrave Post Office, Church Street 636217

Youlgrave Garage – Motor engineers and MOT
Test Station 636943

Zumba with Dave – exercise to fantastic music every
Tuesday lunchtime in Youlgrave Village Hall
www.davidpryor.zumba.com, email dpryor@supanet.com

**2016 Bugle sponsorship
renewal now due
– see page 16**

COMMUNITY GROUPS & ORGANISATIONS

Beavers, Cubs, Scouts (meeting times on inside back
page) 636605

Granby House, Housing for older people 636123

Middleton & Smerrill Parish Council 636151

Youlgrave Beekeeping group 630202/636550

Youlgrave Bellringers
Contact David Camm, Tower Captain 636576

Youlgrave Carnival
youlgravecarnival@hotmail.com 077451 48993

Youlgrave Bowls Club, Mick Partridge 636066

Youlgrave Cinema 636836

Youlgrave Day Centre (Monday Club) at the Village
Hall, contact Shirley Brassington 636310

Youlgrave Horticultural Society
Contact Leslie Toyne, Treasurer 636484

Sponsors' list continues inside back page