



The

Bugle



**A chance to blow your trumpet for the villagers of
Alport, Middleton and Youlgrave**

No. 132

February 2011

Youlgrave break-in

A till and other items were stolen during a burglary at a property on Fountain Square overnight on 18-19 January. On the same night there was also an attempted break-in at a shop premises on Church Street, plus an attempt to steal a Volkswagen Golf motor vehicle parked in Middleton by Youlgrave. The vehicle was found to be hotwired with damage to the ignition. If you have any information to help the Police with their enquiries call 0345 123 33 33.

Post Office update

Negotiations to relocate Youlgrave Post Office within the village continue. Thanks to outgoing Sub-postmaster Roger Easton for temporarily agreeing to withdraw his notice to close, and to local customers who continue to support this essential village facility. More news next month.

Long Rake road safety

In response to residents' complaints about road safety issues, Youlgrave Parish Councillors took their Derbyshire County Council counterparts, including Cabinet Members Simon Spencer and Chris Jackson, on a tour of Long Rake last month. They pointed out the volume of HGVs using the route, the lack of warning signs and the huge pot holes along the edge of the highway which have contributed to several accidents. DCC has promised to respond to the Parish Council in due course with possible ways forward.

Youlgrave couple tie the knot



*Despite the wintry weather, **Kate Lorains** and **Richard Partridge** tied the knot just before Christmas at Youlgrave's All Saints Church. The service was conducted by Rev Garrie Griffiths and the celebrations continued afterwards at the Old Hall Hotel in Buxton. Kate and Richard would like to thank all of their family and friends for the kind wishes and in helping to make their wedding day so very special.*

Bakewell Carpets

Wide range of carpets,
rugs and carpet tiles

Free fitting, free delivery
Free estimates
Home selection service

London House
Matlock Street
Bakewell DE45 1EE

Simon Northcott

Trust and Estate Practitioner
Do you need:

- to make a **Will**?
- help in **administering the estate** of a late friend or relative?
- make an **Asset Protection** or other **Trust**?
- advice on **Inheritance Tax**?
- make a **Lasting Power of Attorney** or
- appoint a **Court of Protection Deputy**?

IF SO I CAN HELP YOU

I am a member of the Society of Trust and Estate Practitioners and practise in the Peak District, after retiring early from 29 years as a solicitor – 17 years as a partner in a busy London firm.

I charge £60 an hour

A simple Will is £90, £140 for a couple.

Home visits to fit in with your needs.

mail: simon.northcott@talk21.com

01629 636523 or 07706 956067

J.W. & J. Mettam Limited

*Family Funeral Directors
since 1899*

Ambrose House,
Granby Croft,
Bakewell DE45 1ET

(01629) 812114

Member of Parliament for Derbyshire Dales:

Patrick McLoughlin MP

Telephone: 020 7219 3511

E-mail:

patrick.mcloughlin.mp@parliament.uk

Post:

House of Commons
London SW1A 0AA



- Supply & Fitting of all Domestic and Contract Carpets
- Supply & Fitting of Vinyl, Laminate
- Supply & Fitting of Real Wood Flooring
- Supply & Fitting of Sisal and Natural floorings



- ❖ Guaranteed Workmanship
- ❖ Free Fitting Service
- ❖ Free Home Selection Service
- ❖ Moving & Replacement of Furniture
- ❖ Disposal of Old Carpet
- ❖ Customers' Own Car Park

43/47 High Street, Clay Cross, Chesterfield
Tel: 01246 863148



See our **WEBSITE** at: www.nutt.co.uk

VILLAGE NOTICEBOARD

ATTENTION ALL READERS

Youlgrave Carnival Committee needs your help!

As always, we are seeking your help in providing Raffle and Tombola prizes, or alternatively any financial donations would be greatly received. Why not approach your place of work for their support and see if they would be willing to offer a free voucher or offer of some work done free (garden or personal make-over would be a great raffle prize!).

Is your organisation looking to raise extra funds? We have the perfect opportunity as we are looking for a team of helpers to take on the running of the tea coffee and cake stand in the marquee; any monies raised would go to your cause.

Calling all local businesses and organisations, or anyone looking to promote their own smaller business! Make sure you consider having a stall on carnival day – we have such a huge attendance and are always looking for diverse and interesting stalls. This is a great opportunity to establish your enterprise further and promote it, whilst earning a few pennies and supporting us.

We need helpers throughout Carnival – if possible, we would appreciate the same marshals as last year – if you are available please let us know. Any help during the week, be it big or small, is not only appreciated but vital in ensuring things run smoothly.

Any new ideas and suggestion are always welcome! We want to support and promote our village and its people so please help us.

Contact: youlgravecarnival@hotmail.com
Jessica 07921228441
Leah 07745148993

Carnival date will be confirmed in next month's issue of the Bugle..

THE WEE DRAM WHISKY TASTING

Saturday 12th March

at The Farmyard Inn

7.45 pm

£22.00 per person
(includes a pie and pea supper)
Tel 01629 812235 or 01629 636045
for tickets

Join us as we taste six exceptional
whiskies, followed by the
Farmyard's legendary pie and pea
supper – who could ask for more?

**Deadline for the March
issue of the Bugle:
Friday 25 February**

Contact details: page 19

Quiz Night

In aid of Youlgrave Bowls Club

Friday 18th February at 8pm

At the Farmyard Inn

Teams of 4-ish

Christine Fielden

A tribute from a friend

Christine (Chris) Fielden, who died last November, was not only my friend, but a very active friend of many Youlgrave residents and visitors. She introduced me to the team of Fountain Welldressers a few years ago, and stayed with us into the early hours last year helping with another needy team. Known as 'Miss Buttercup', she will be sorely missed by us all this summer.

Before retirement, Chris was a respected and much-loved teacher at Rowsley School. Chris and Peter loved our village, and were thrilled to find their ideal bungalow here, to which Peter will still hopefully move very soon and be sure of a warm welcome and support in his future life. Typically, Chris was chatting and helping at the Monday Club a day before the road accident which sadly cost her her life – far too soon.

She loved and excelled at handicrafts, at home in Stanton-in-Peak, at her group in Earl Sterndale and further afield. Unless on their beloved travels, be it to Portugal or Cumbria, the Fieldens were always at the Blessing of the Wells, band concerts, village markets and fundraising, and Chris was a deservedly guaranteed winner at the Village Show. Her enthusiasm was an example to us all. The packed rows at her December funeral of family and long-standing friends proved her popularity in many different circles. To date, donations in Chris's memory towards the Church have reached over £1,000, and the very convivial buzz at the following Village Hall tea was a fitting tribute to a much-missed colleague and friend.



YOULGRAVE VILLAGE MARKETS 2011

12th February

20th August

9th April

15th October

11th June

10th December

Youlgrave Village Hall: 10am – 12noon



Contact Lucy or Jeni for a stall on 01629 630315 / 636550

Norman Wilson

It is with great sadness that we have to report that Norman Wilson passed away last month after a long illness. A full tribute will appear in the next issue of the Bugle.

Youlgrave, December 2010



Snow Heroes 1

Amy's Dairy milk delivery – not a day missed (unlike the Royal Mail...).

Snow Heroes 2

Mrs Heather Wood, Youlgrave School head cook – arrived at school by tractor in order to make sure pupils were cooked their customary hot, healthy meal at lunchtime.

Snow Heroes 3

Peak District National Park Ranger Service – used their 4x4 vehicles to deliver emergency medical supplies to Youlgrave Health Centre when the regular delivery vehicle couldn't get through.

Thank you and well done!

From a number of Bugle readers: Thank you to various local farmers, including John Eley and Simon Frost, whose efforts made sure that thoroughfares like Moor Lane and Bradford Road were at least passable for others.

All Alone By The Telephone

The wind is blowing, down comes the snow,
As I sit here at home with nowhere to go
I gaze through my window,
The streets are all bare.
The snow is so deep, at least three feet high
Not a thing to be seen, not a bird in the sky.
Now and again, down comes a rook
Searching for food, without any luck.
It's breaking my heart to see the poor things
So cold and so wet, head under their wings.

Yet sometimes I wish that I was a bird,
It may sound foolish or even absurd,
But much better than sitting in my room all alone,
Just waiting for someone to call on the phone.

By Mrs Barbara Hopkinson (88), Westcroft Close, Youlgrave

Snow Problem for Banksiders

The recent snow showed every cloud has a silver lining. Bankside is a big problem when snow hits. One Saturday, a group of us came spontaneously together to clear it and ensure the path to the river was safe for residents and walkers. We were treated to hot muffins and coffee by our resident domestic goddess Gill, which was welcome after the snow clearing and gave us energy to finish the job! That is why I love living here: community in action through helping each other out whether clearing snow or making muffins and coffee - everyone played their part.

Lucy S.

And you think we had heavy snow? The extract below is from Youlgrave Church Registers from 1614/15 which records snow falling from January through to March! Thanks to Gordon Coupe for supplying the information.

A MEMORIAL OF THE GREAT SNOW.

Begininge
Jan. 16.

An elne deep
uppon the
playn ground.

East, West,
North, South,
March 12.

Sabboth.

End 28 Maie.

This year 1614/5 Jan. 16 began the greatest snow snow (*sic*) which ever fell uppon the earth, within man's memorye. It covered the earth fyve quarters deep uppon the playne. And for heaps or drifts of snow, they were very deep; so that passengers both horse and foot, passed over gates, hedges and walles. It fell at 10 severall tymes and the last was the greatest, to the greate admiration and feare of all the land, for it came from the fowre p^{ts} of the world, so that all entryes were full, yea the South p^{te} as well as these mountaynes. It continued by daily encreasing until the 12th day of March (without the sight of any earth, eyther uppon hilles or valleyes) uppon w^h day (being the Lorde's Daye) it began to decrease; and so by little and little consumed and wasted away, till the eight and twentyth day of May for then all the heapes or drifts of snow were consumed, except one uppon Kinder's Scowt, w^h lay till Witson week and after.

HYNDERANCES AND LOSSES IN THIS PEAKE CÜTRY BY THE SNOWE ABOVE SAYD.

1. It hyndered the seed tyme. A very cold spring.
2. It consumed much fodder (multitude of sheep, cause, continuance of cold wether).
3. And many wanted fewell; otherwyse few were smothered in the fall or drowned in the passage; in regard the floods of water were not great though many.

"The Name of our Lord be Praysed."

"The spring was so cold and so late that much cattell was in very great daunger and some dyed.

"There fell also ten lesse snowes in Aprill, some a foote deep, some lesse, but none continued long. Uppon May day, in the morning, instead of fetching fflowers, the youthes brought in flakes of snow, w^h lay above a foot deep uppon the moores and mountaynes. All these aforesayd snows vanished away and thoed with little or no rayne."



Learning lessons from the cold snap

Dear Editor,

I have a pet theory that common sense is inversely proportional to one's cleverness, or self-assumed cleverness. This theory was proved absolutely correct recently when irrefutable proof of 'global warming' was provided, manifesting itself in the shape of the coldest December since records began in 1910. Despite the media of every kind blaring out weather warnings of deep frost 24 hours a day, cars frozen, diesel frozen, ice on the road, etc, people's most expensive asset – the house – doesn't seem to have been given a second thought. As the period of 'global warming' continued, the Waterworks was inundated with calls from people with no water supply; 95% of these cases, no less, were holiday cottages, and one other instance where people had been away for a few days over Christmas; one up Moor lane was a new property which was supplied by the Severn Trent, so it wasn't just YWW. The premises were left with no heating on, or worse some with no heating and the stop tap not turned off, this in the coldest December for years. The lucky ones got back in time to only suffer their supply pipe frozen, others returned after

the slight thaws we had, to find their most precious asset turned into a Nordic Glacier, which must have been heartbreaking even if you have been foolish. What hurts even more, it need not have happened if they had only taken a few simple and relatively inexpensive precautions. To leave any house unattended, holiday cottage or other, in the recent period of 'global warming' was an act of sheer folly. The relatively small bore pipe to the house will freeze very easily, and the older the property, this becomes even more likely.

When there was a slight thaw before Christmas we lost 85,000 gallons of water in two days, before we tracked down the culprits, two very public bodies, who shall remain nameless to save their blushes, numerous outside taps and toilets, cattle troughs, etc. All this was not much fun in snow and slush. Try to use your 'common sense' next time it happens, as surely it will, as 'global warming' will only get worse.

This is a purely personal view and does not necessarily reflect the views of Youlgrave Waterworks.

Malc Stacey

School consults over proposed admission policy

The Governors of Youlgrave All Saints CE (VA) Primary School wish to consult with the local community about their proposed admission arrangements for pupils entering the school from September 2012 onwards.

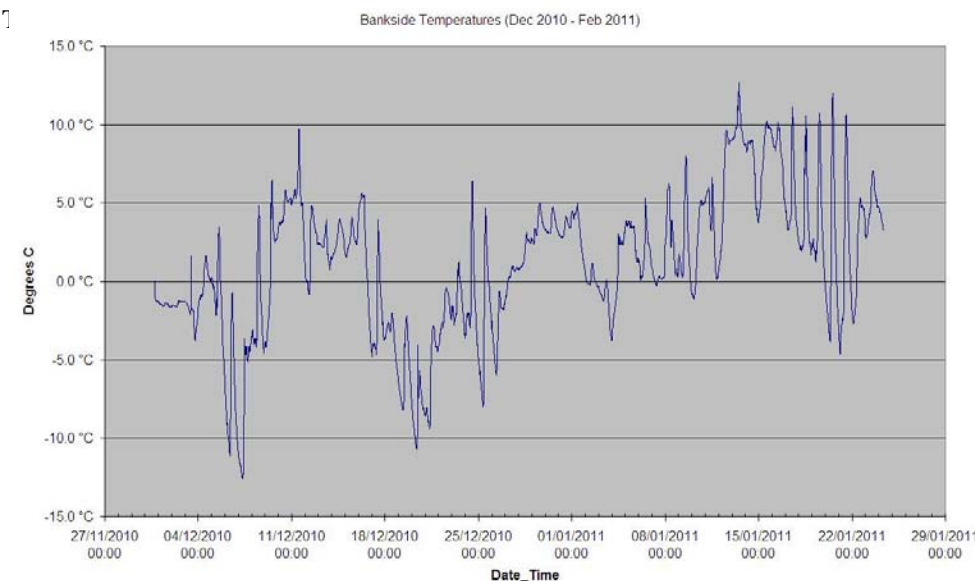
A copy of the proposed arrangements can be obtained from the Clerk to the Governors, c/o Youlgrave All Saints' School, Alport Lane, Youlgrave, Derbyshire DE45 1WN. Any comments should be returned to the Clerk no later than 3.30pm Friday 25 February 2011.

A public meeting at which interested parties can ask questions and make representations about the admission arrangements will be held in School from 6.30pm to 7pm on Monday 7 February 2011.

*Matthew Lovell
Clerk to the Governors*

Temperatures take a tumble

Pre-Christmas temperatures dipped staggeringly low in our valley, with a night-time temperature at Alport reportedly as low as -18°C. Youlgrave's Dave Brown has a small electronic temperature logger in his garden at the top of Bankside and below are his readings from 27 November 2010 to 29 January 2011. Of particular note is the swing in temperature – some days almost 15°C.



Area Community Forum

Wednesday 9 February, 7 pm
Agricultural Business Centre,
Bakewell

Come along and quiz Derbyshire Dales District Council, Derbyshire County Council, Derbyshire Constabulary and the Peak District National Park.

Read the Bugle on-line
www.thebugle.org.uk

DO YOU HAVE ANY SPARE HONEY JARS?

Youlgrave Bee Group need lots of screw-top 1lb honey jars in the expectation of collecting plenty of honey from the new hives next summer. The honey will be sold at the village markets and all proceeds will go back to the village projects – no profits will be kept by the bee keepers. Please can you take your spare jars to Hollands butchers in Youlgrave where there's a special collection box.



The Happy Plaice

A mobile Fish and Chip van comes to Youlgrave every Wednesday, 3.30 till 7pm

Location – Westcroft Close

Everything is cooked fresh to order

See our varied menu at www.thehappyplaice.co.uk

You can also book us for special occasions and parties

‘The Secret’ at Peak Serenity

Cliff Farm, between Elton and Alport

A 5-star retreat in idyllic surroundings. Total privacy.

Open all year.

www.peakserenity-derbyshiredales.co.uk

relax@peakserenity.co.uk

01629 650712

MAXIES TAXI

Roy Brindley

01629 636409

07710 867887

Anne Hunt Driving School

Driving Tuition

New Drivers

Refresher Courses

Pass Plus registered
24 years experience

Lavender Cottage
Fountain Square, Youlgrave
annie@paua.fslife.co.uk
01629 636162 07792 059129

THEFARMSHED
EVERYTHING ORGANIC 

Local, organic produce delivered to your door

Supporting Local Farmers and Producers

www.thefarmshed.co.uk
08458 333135



Read the Bugle on-line and in colour at

www.thebugle.org.uk

Includes all the back issues and special editions

Youlgrave Garage

Getting married? Need chauffeured limousines? Give us a call, we offer a full tailored service to meet your needs.



Our range of cars includes a Bentley Turbo R Red Label, Bentley Brooklands Turbo and Rolls Royce Silver Shadow.



Alport Lane, Youlgrave. Tel 01629 636943
E-mail limos4hire@uwclub.net

Regrettably the District Council decided not to provide you – Council Tax paying residents – with a simple print out of the waste collection dates for the year ahead. So the Bugle decided to instead. Here's your cut-out-and-keep timetable:



Blue Box, Blue Bag and Green Bin Collection Calendar 2011



Blue Box and Blue Bag collections will be made fortnightly on the same day as Household Refuse collections, as shown on the shaded dates below.

Green Bins will be collected fortnightly on the days outlined below.

December 2010				January 2011				February 2011			
M	6	13	20	M	3	10	17	M	7	14	21
T	7	14	21	T	4	11	18	T	8	15	22
W	1	8	15	W	5	12	19	W	2	9	16
T	2	9	16	T	6	13	20	T	3	10	17
F	3	10	17	F	7	14	21	F	4	11	18
S	4	11	18	S	1	8	15	S	5	12	19
S	5	12	19	S	2	9	16	S	6	13	20
March 2011				April 2011				May 2011			
M	7	14	21	M	4	11	18	M	2	9	16
T	1	8	15	T	5	12	19	T	3	10	17
W	2	9	16	W	6	13	20	W	4	11	18
T	3	10	17	T	7	14	21	T	5	12	19
F	4	11	18	F	1	8	15	F	6	13	20
S	5	12	19	S	2	9	16	S	7	14	21
S	6	13	20	S	3	10	17	S	1	8	15
June 2011				July 2011				August 2011			
M	6	13	20	M	4	11	18	M	1	8	15
T	7	14	21	T	5	12	19	T	2	9	16
W	1	8	15	W	6	13	20	W	3	10	17
T	2	9	16	T	7	14	21	T	4	11	18
F	3	10	17	F	1	8	15	F	5	12	19
S	4	11	18	S	2	9	16	S	6	13	20
S	5	12	19	S	3	10	17	S	7	14	21
September 2011				October 2011				November 2011			
M	5	12	19	M	3	10	17	M	7	14	21
T	6	13	20	T	4	11	18	T	1	8	15
W	7	14	21	W	5	12	19	W	2	9	16
T	1	8	15	T	6	13	20	T	3	10	17
F	2	9	16	F	7	14	21	F	4	11	18
S	3	10	17	S	1	8	15	S	5	12	19
S	4	11	18	S	2	9	16	S	6	13	20

Environment Hotline 01629 761215
www.derbyshiredales.gov.uk

Bangbutt Village Link Carol Singing - Living Christmas Cards

Three images remain with me:

Card 1: A group of carollers with lanterns aglow stood outside Whytecoat and started to sing. At the big leaded light window, half way up the stairs, a little child appeared, in pyjamas and half asleep, eyes wide with wonder. The front door opened to show daddy holding a little boy wearing his nightclothes and behind them was a beautiful Christmas tree. A moment later, mummy appeared at the stairs window and wrapped her arm round the little boy.

Card 2: The same group of carollers stood in the road at the side of The George. The moon shone bright just to the side of the church spire. Enthusiasm was waning when the lady of the house appeared and stood outside in the snow, dancing to the singing and with a look of such obvious pleasure and enjoyment on her face that people forgot their cold feet and fingers and the volume swelled.

Card 3: The carollers had been invited to sing at one house and then to partake of refreshments. When they entered the room glittering with beautiful decorations, a table heaving with food and goodies greeted their eyes. There was dried ham, an enormous plate of baked potatoes straight from the oven and the most wonderful homity pie ever tasted – not to mention the wine and coffee. The Christmas Spirit certainly abounded in that house.

Thank you to everyone who listened, donated and provided sustenance, including the lady in Brookleton. Apologies to all the houses we didn't manage to visit. A special thank you to the vicar and his wife whose 'and now I am sure you would all like a warm drink' were the most welcome words I heard all Christmas. Congratulations to all the carollers who braved the bitterly cold weather – I hope you enjoyed it as much as I did. We raised £127 to help train natural childbirth attendants in Sierra Leone. JN

Names of Youlgrave mines

Jack-at-a-pinch
Dirty Face
Shining Gutter
Quith Holes
Strong Wint
New Years Gift
Nick i' th Tor
Burning Drake Vein
Nellie Long Arm
Shining Sough
Crash Purse Sough
Penny Whistle Vein
Timperley's Old Wife
Luck of Old Shack
Cat Hole Vein
Golden Purse
Tobacco Box
Snuff Box

Spotted by Dave Brown in a display in the Peak District Mining Museum at The Pavilion, Matlock Bath (open daily, tel 583834 or go to www.peakmines.co.uk).



Friday 11 February

INVICTUS (12A)

The incredible story of how Nelson Mandela united all parts of South African society behind the Springbok rugby team during the 1995 Rugby World Cup. Directed by Clint Eastwood and starring Morgan Freeman and Matt Damon, it's a tale of how a divided country can be united through the universal language of sport. 128 mins.

7.30pm, Youlgrave Village Hall. Free to members or £5 on the door.
All welcome. Refreshments.

Mick Partridge's Poetry Corner

Vocation

I think I was born to be funny,
Well just take a look at my face,
I am no oil painting,
And I don't get girls fainting,
But I can move it all over the place.

I'm glad I was born to be funny,
I just love to hear people laugh,
Well I'll tell them a joke,
About a girl and a bloke,
Or a man who kept coal in the bath.

It's true I was born to be funny,
I love a pantomime or a play,
I usually play the dame,
With a very strange name,
And walk in a very strange way.

I'm sure I was born to be funny,
I like to do magic for kids,
I make things disappear,
And that makes them cheer,
But they know all along it's been hid.

I'm glad I was born to be funny,
Life is too short to be down,
Just have a good laugh,
Think of me in the bath,
End the day with a smile not a frown.

Sometimes it's hard to be funny,
When life is passing you by,
When life is getting tough,
Oh yes it can get rough,
Even a fool needs to cry.



WHAT IS A BEE FRIEND?

As you may have heard, there are fewer honey bees around these days. This is not good – especially if you like honey! So Youlgrave people decided to do something about it. Last year, the Youlgrave Bee Group was established. Thirteen people were trained to be bee-keepers and a small apiary (group of bee hives) was set up. But that's only half the story. When one single beehive is busily making honey in May and June, there are something like 50,000 bees at work inside, and they require plenty of pollen and nectar from flowers to do the job. Right. So we now have some bees. What we need to do next is to make sure they have enough to eat this summer to survive happily in our valley – and that's where YOU come in!

Will you become a Youlgrave Bee-Friend?

Pollen and nectar for honey bees (and most other insects, especially bumblebees and butterflies) are often found in plants with 'open faces' where you can see a ring of petals round a central group of stamens, or ones which are shaped especially for bee tongues to feed from. These are often plants growing wild like daisies and buttercups and clovers, but in our own gardens we can plant flowers which not only look beautiful but are useful for insects too. The more flowers in the valley, the happier our bees will be! They will thrive and multiply and produce more and more honey which can be shared by the people who live here. We will also find that the crops from our fruit trees and vegetables will be better and larger as they are pollinated by busily feeding insects.

Continued next page...

Youlgrave Wildlife Notes: December & January

The fairly extreme weather over the last couple of months has produced some interesting bird life. There was a shoveller drake on the Bradford, along with a tufted duck, dabchick and a couple of dippers. There were five mandarin drakes and five wigeon just below Conksbury Bridge. I received reports of good views of barn owl and green woodpecker near Conksbury, a greater spotted woodpecker at Coldwell End and excellent photos of a buzzard across the dale and a stonechat at Brookleton. Though not rare, I haven't seen stonechats around the village, so a nice observation. I had one visit from a female sparrowhawk and a goldcrest on the fat ball. Goldcrests were very active at the water's edge in the Dale. Redwings and fieldfares have been quite common, with three redwings eating the last of my holly berries just in time for Christmas. I have had no reports of waxwings in the village, but they have been seen quite widely in Bakewell and Matlock.

The clear, cold weather has given some opportunities for star gazing. Jupiter is still roaming around the sky, but nothing like as bright as a few months ago. The constellation Orion the Hunter is very obvious in the southern sky. This huge 'H' of four stars at the corners and a line of smaller stars forming the belt also acts as

a pointer to other constellations. If you follow the line of the belt to the left you will find the very bright Dog Star, Sirius. Take a diagonal from bottom right to top left and you will find Castor and Pollux, the Heavenly Twins. Follow the belt to the right and you will find the Pleiades or Seven Sisters (though probably not seven) as a faint cluster.

The birds seem to think that Spring is almost here. The great tits are making their "teacher, teacher" call, the dunnocks are giving their extended twittering song and the dippers are really belting out their remarkably tuneful and powerful song in the Dale.

There is a summary of the species found on the playing field Wildlife Area in 2010, with photos of the highlights, on the notice board down there. My thanks to all contributors. Please send me any interesting sightings.

Ian Weatherley

iweatherley@tiscali.co.uk or 636350

The Peak National Park needs your help to combat light pollution by reporting how clearly you can see Orion at night. Go to www.peakdistrict.gov.uk/darkskies for more details about the Dark Skies initiative and how you can help.

It's simple to become a Youlgrave Bee Friend?

Just register on our bee blog at youlgravebeegroup.blogspot.com or contact Jeni Edwards on 636550 or Judith Orchard on 630202. Once registered, you will be eligible to buy packets of seeds for bee-friendly flowers for just 30p each. They will be available at the Youlgrave Village Market in the Village Hall from 10-12 noon on Saturday 12 February. Seeds ordered include alyssum, anchusa, antirrhinum, candytuft, cornflower, cosmos, dianthus, pot marigold (calendula), nasturtium and stock. All seeds are ordered as small varieties so they can be grown in pots. You will also be eligible to enter our exciting Wheeled Gardens competition to be held as part of the Youlgrave Carnival in July – and to join in with the big bee count this summer which will find out how many different kinds plant we can see bees feeding from in our villages?

New Year's Resolution!

After the snow stopped many activities and events planned for December, including the Group Carol Service and our own Christmas dinner (although some of us met for a Christmas dinner in the Farmyard instead), the WI this year was able to meet up in January... and in the bigger room in the village hall since we have so many more members now!

We welcomed further new visitors and new members. Events planned include trips on a canal boat with lunch for summer time, the Pride and Prejudice theatre trip (which was fab, although Mr Darcy was a little bit of a let down for us girls!) and our next knit and natter on the 21st which, as usual, more nattering than knitting got done. We are proposing other clubs, including a Stitch and Bitch, Book club and Games night, so watch this space!

The speaker was home grown-talent (*steady, Lucy – Ed*) in the form of Andrew McCloy, who gave us an excellent talk about Peakland Pubs. The history and the breadth of pubs – and their quirks – that the Peak District has to offer are truly amazing. Although I don't think the women were that impressed by the Quiet Woman...! (Not much of that in our meetings!)

We also had to decide upon our resolution for the WI to lobby on this year, which will go to National Federation and then further discussion later in the year before being decided upon at the AGM. Each member is allowed to vote on one and the choice was very broad, including mega farms, national dementia care, saving our trees, helmets for cyclists, support for Alzheimer's sufferers, closure of local libraries and the controlled use of

The COURTYARD

Kitchen Bedroom and Bathroom Studio
Stove and Cooker Centre
Tile Showroom

Visit the newly refurbished
STOVE & COOKER CENTRE

Filled with gas, oil, electric and solid fuel appliances.
Stove & cooker spares available – mostly from stock.

NEW WORKING KITCHEN

Ring for cooking demonstration dates.

**COOKING & HOUSEWARE SHOP
NOW OPEN**

Pots, Pans, Ironing boards, Tea towels, Pictures, Clocks, Bake ware.
Antifreeze, Car wash, Bird food, Log baskets and much, much more.

The Courtyard

Commercial Rd. Tideswell.

Mon - Fri 9am - 5.30pm

Sat 9am - 5pm

Tel 01298 871223 - www.mmarkovitz.co.uk

mobility scooters. WI isn't all about Jam and Jerusalem!

We had our usual social, cakes and catch up time with girls you haven't seen for a while and new girls to chat to, which is always my favourite part of the evening.

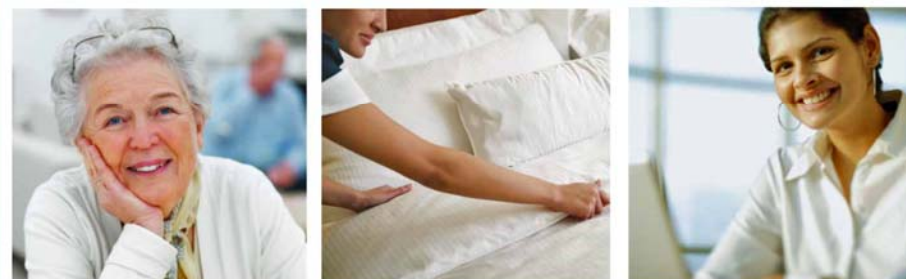
Our next meeting is on 8 February, from 7.30pm at the Villlage Hall; and our speaker is from Stanton and will be talking about body language! If you are interested, please do come along; your first visit is free and only £2 after that. If you become a member you will be refunded this fee.

If you want to chat about WI before coming do ring me on 630315(eve) or email me at stirlinglucyb@hotmail.com

Lucy Stirling

30-something WI enthusiast

The care you need, the way you want it.



Whether you need a hand with the ironing or more extensive help coping with an illness, you can trust us to provide exactly the kind of quality homecare services you want in the way that suits you best.

Amongst other services, we offer:

- Long term, short term and emergency care
- Cleaning, ironing and help preparing meals
- Support whilst recovering from illness
- Sleep-in, live-in and night care
- Escorts to events and social activities
- Holiday cover

All our staff are trained to the highest standard.

Please call **01629 736750** for more information or to request a brochure.

Audley Care

Dale Road South, Darley Dale, Matlock, DE4 2RH

www.audleycare.co.uk



Please support the Bugle in 2011

It's that time again when we invite local businesses, community groups and individuals to sponsor the Bugle for the year ahead. Rates remain unchanged at £25 for businesses and £20 for community groups and individuals, although donations of any size are always welcome! Thank you for your continued support, which enables The Bugle to remain a free community publication.

BUGLE SPONSORSHIP 2011

- **£25** for businesses and local authorities OR
- **£20** for individuals and community groups

Name

Address/tel no

Optional one-line description & contact details:
.....

*Please make cheques payable to **The Bugle** and deliver or send them, together with this form, to Ann Knowles, The Garden House, Fountain Square, Youlgrave DE45 1UR. You will be sent a receipt. Thank you.*

The Youlgrave Exchange

Bosch 2000 electric garden shredder. Sound working order. Tel 636338.

There are volunteer opportunities at the Bugle for budding writers, reporters, editors, proof readers and photographers. No experience necessary, just enthusiasm and commitment! Contact Andrew on 636125.

SATURDAY WASTE COLLECTION

Alport & Youlgrave: 12 & 26 February

Alport: 7.45-8am, Youlgrave School: 8.05-9.30am, Bradford & Mawstone Lane: 9.35-10.10am, Grove Place Police House: 10.15-10.30am, Grove Place other end: 10.30-10.45am

Middleton by Youlgrave: 5 February

The Square: 9.45-10.45am

ANNUAL SPONSORS: COMMUNITY GROUPS & ORGANISATIONS

Beavers & Cubs (meeting times below)	636605	Youlgrave Methodist Church	636558
Granby House, very sheltered housing for the village	636123	Youlgrave Neighbourhood Watch	636022
Knoll Club & Royal British Legion (Youlgrave)		Youlgrave Parish Church, Revd G Griffiths	630409
Middleton & Smerrill Parish Council		Youlgrave Parish Council	636151
Sustainable Youlgrave: www.sustainableyoulgrave.org	636125	Youlgrave Playschool, 9am-12 noon, Mon-Fri, for ages 2 to school	636768
Youlgrave Bellringers	636576	Youlgrave Reading Room	636477
Youlgrave Carnival	636221	Youlgrave School Association	636605
Youlgrave Cinema www.youlgrave.com/Youlgrave_Cinema.htm	636836	Youlgrave Scout & Community Hall, for hire contact Melanie Marsh	636605
Youlgrave Day Centre (Monday Club) at the Village Hall, contact Lise Marple	636287	Youlgrave Silver Band	636362
Youlgrave & District Horticultural Society - contact Leslie Toyne, Treasurer	636484	Youlgrave Village Hall, for parties & events	636570
		Youlgrave Welldressers	636341
		Youlgrave Wesleyan Reform Chapel	636251
		Youlgrave Women's Institute	636479

REGULAR LOCAL EVENTS

Mondays Monday Club (Day Centre), Youlgrave Village Hall, 10am-3pm	Thurs Beginners class 7-8.30pm, The Barn, Greenfields Farm (636341)
Tuesdays Yoga with Iris Pimm (636341), The Barn, Greenfields Farm, 7-9pm	Thurs Youlgrave Silver Band, Methodist School Room, 8pm
Tuesdays Youlgrave Youth Club, Scout & Community Hall, 6.30-8pm	Fridays Gentle Yoga, Scout & Community Hall, 3.30pm
Tuesdays Youlgrave Bell Ringers practice night, All Saints Church, 7.30-9pm	2nd Mon Mobile Library, Greenfields Farm, 9.30am; Alport, 9.45am; Abbeyfield, 10am; Bradford, 10.20am; Rock Farm, Middleton 10.40am
Mon-Fri Youlgrave Playschool, Scout & Community Hall, 9.15-12 noon	2nd Tues Youlgrave WI meetings, Youlgrave Village Hall, 7.30pm
Weds Drawing and painting classes, Youlgrave Reading Room, 10am	4th Wed Confidential Advice Sessions with Matlock & District Citizens Advice Bureau, Youlgrave Medical Centre, 9.30am-12.30pm
Weds Parent and Toddlers Group, Reading Room, 1.15-3.15pm	Alternate Thurs Mobile Library, Grove Place, 2-4.30pm, Holywell La 5-6.30pm
Weds Darby & Joan Club, Youlgrave Village Hall, 1.30pm	2nd Fri of month Mobile Police Station, Holywell Lane, 12.30-4pm
Weds Bingo, Youlgrave Reading Room, 7.30pm	Last Tues of month Youlgrave Parish Council meeting, Youlgrave Village Hall Committee Room, 7.15pm
Weds Beavers and Cubs, Scout Hall, 6.30-7.45pm (term time)	
Thurs Ecumenical women's Bible study and fellowship, Youlgrave Reading Room, from 10am	
Thurs Yoga with Iris Pimm, 9.30-11.30am	

THE BUGLE: Andrew McCloy (Editor), Englemere, Brookleton, Youlgrave, Derbys DE45 1UT
tel 01629 636125 e-mail andrew.mccloy@btinternet.com www.thebugle.org.uk.

Printed by Greenaway Workshop, Hackney, Matlock (tel 01629 734089).

The views in this publication are not necessarily those of the editorial team.

ANNUAL SPONSORS (COMMUNITY GROUPS ON PREVIOUS PAGE)

Amy's Dairy , for fresh milk, free range eggs, cream, orange juice, yoghurts 636639 & 07799 880740	J.W. & J. Mettam , Family Funeral Directors since 1899 812114
Bakewell Bridge Car Park (M. & D. Rhodes), Coombs Road, Bakewell 636453	Ian & Jane Mills , Dove Cottage, Middleton
L.T. Birds , Joinery & Home Maintenance, 23 Northwood Lane, Darley Dale 07786 434376	Ingrid Newman , Handknitted scarves & accessories 636084
Brightmore & Shimwell , Plumbing and Heating Services Martin 07989 984826/Geoff 07971 839515	Simon Northcott will-making, estate administration, inheritance tax advice, lasting powers of attorney simon.northcott@talk21.com , 07706 956067
Dave Brown , Plastering and Home Maintenance 636075 & 0777 3045148	F. Parker , Grocer & Butcher 636217
Castle Farm , Bed & Breakfast, Caravans and Camping Barn 636746	Iris Pimm , The Barn, Greenfields, Alport 636341
Circuit Safe – all electrical work undertaken, certified and guaranteed 01629 55013	Pots from France , Functional and Studio Ceramics from France exhibited Sept and Dec 636689
The Cleaning Ladies , Domestic Cleaners – Cheryl and Liz 07792 105737	Caroline Prince , Domestic cleaner, call for rates and further information 07973 374429
Derbyshire Aggregates 636500	Trevor Sandell & Mrs Dorothy Sandell
Derbyshire Dales Council for Voluntary Service , offering support for local community groups 812154	Barbara Scrivener , Reflexology & massage 636601
Dulux Design Service , your local designer Chris Read www.duluxdesignservice.co.uk 636360/07817169625	Serenity Coffee Shop , Cliff Farm (between Alport and Elton), open Sat & Sun, 12 noon-5pm, 650712 www.serenitycoffeeshop-derbyshiredales.co.uk
Farmyard Inn 636221	Annie Sharpe , Experienced Reflexologist M.A.R. 630295
George Hotel 636292	Mark Shearing/Switchback Mountain Adventure , Outdoor activities and events 07736 771140
Eric Goodwin , Plaster and Tiler 636627	Smerrill Grange , Bed & Breakfast 636232
Liz Hickman/Jeni Edwards , Authors and Plant Sales 636845 & 636550	Cllr Simon Spencer , Derbyshire County Council, simon.spencer@derbyshire.gov.uk , 01629 580000
John Hancock , Plumbing, Heating & Lead Roofing 636455 & 0771 0640142	Carol & John Sutcliffe , self-catering holiday accommdn at The Cottage, Crimbles Lane 636570
The Happy Plaice , Mobile Fish and Chips every Wed 3.30-7pm on Westcroft Close 07576 718573	Thimble Cottages , beautiful holiday cottages in Derbyshire www.thimble-cottage.co.uk
Hollands Butchers 636234	Tulips Florist , Flowers for every occasion – daily delivery service, 1 Diamond Ct, Bakewell 815816
Hopping Farm Caravan Park 636302	Andrew Twyford , Motor Engineer 636093
Anne Hunt , Driving School – Beginners, Refresher courses, Pass Plus 636162	Kathi Ward , Woodwind instrument repairs kathi@repairs007.fsnet.co.uk , 636179
Hypnotherapy/Psychotherapy 636421/0780 1315108	The Wee Dram , specialist whisky retailer, 5 Portland Square, Bakewell 812235
James Bacon/JDB Plumbing & Heating 636637 & 0786 6365610	John & Jean Youatt , New Road, Youlgrave 636241
Peter Knowles , Architect 636362	Youlgrave Garage – Motor engineers and MOT Test Station 636943
Long Rake Spar Co Ltd , decorative gravels, aggregates and hard landscaping products 636210	Youlgrave Post Office 636201
Frank Mason , Portable appliance testing 650241	Youlgrave United Football Club 636038
Maxies Taxis 636409 & 07710 867887	Youlgrave Waterworks – 07798 525075 (payment enquiries), 07762 053979 (service enquiries)